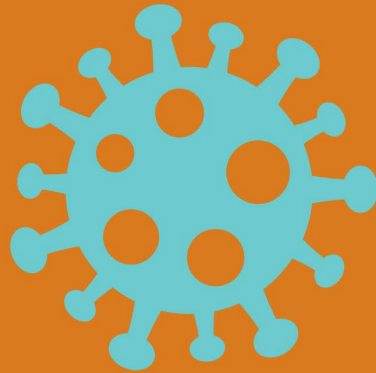


# Diabetes, Lower-Wage Workers and COVID-19

May 19 | 12:00 - 12:30PM



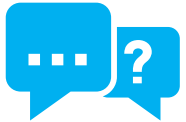
*Support provided by*



# Webinar Procedures



All lines will be muted



Please submit all questions using the “Q&A” dialog box



Email Diane Engel at [dengel@nebgh.org](mailto:dengel@nebgh.org) with any issues during this webinar



**The recording and a PDF of the slides will be shared**



Q&A

You have no question.

What h

☐ Send Anonymously

Send

## Social Determinants of Health

Economic Stability	Neighborhood and Physical Environment	Education	Food	Community and Social Context	Health Care System
Employment	Housing	Literacy	Hunger	Social integration	Health coverage
Income	Transportation	Language	Access to healthy options	Support systems	Provider availability
Expenses	Safety	Early childhood education		Community engagement	Provider
Debt	Parks	Vocational training		Discrimination	linguistic and cultural competency
Medical bills	Playgrounds	Higher education		Stress	Quality of care
Support	Walkability				
	Zip code/ geography				

### Health Outcomes

Mortality, Morbidity, Life Expectancy, Health Care Expenditures, Health Status, Functional Limitations

Genetics  
20%

Health Care  
20%

Social,  
Environmental,  
Behavioral  
Factors  
60%

Source: Henry J. Kaiser Family Foundation

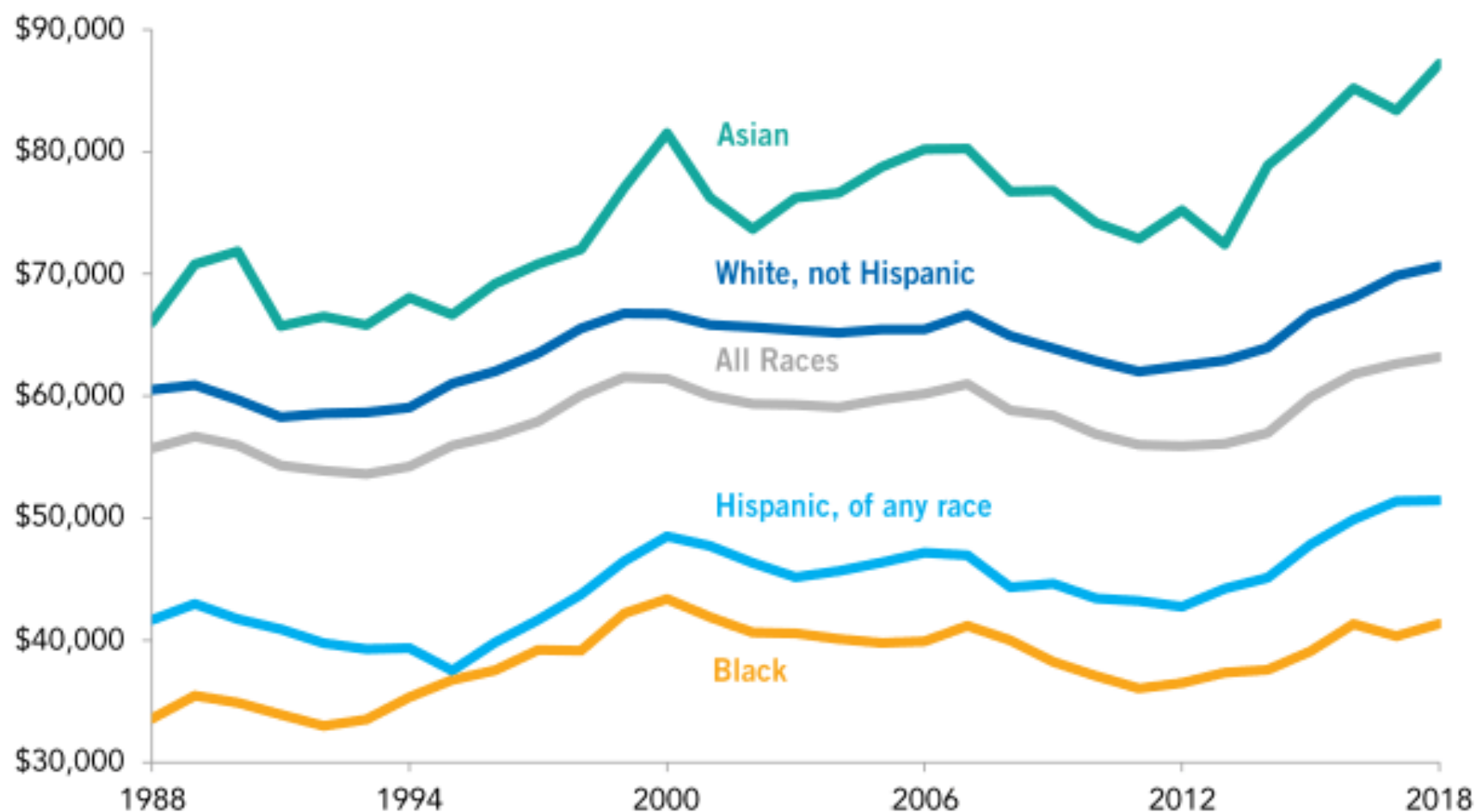
# Income by Race



PETER G.  
PETERSON  
FOUNDATION

Income varies widely across racial and ethnic groups in the United States

MEDIAN HOUSEHOLD INCOME BY RACE/ETHNICITY OF HOUSEHOLD HEAD (2018 DOLLARS)

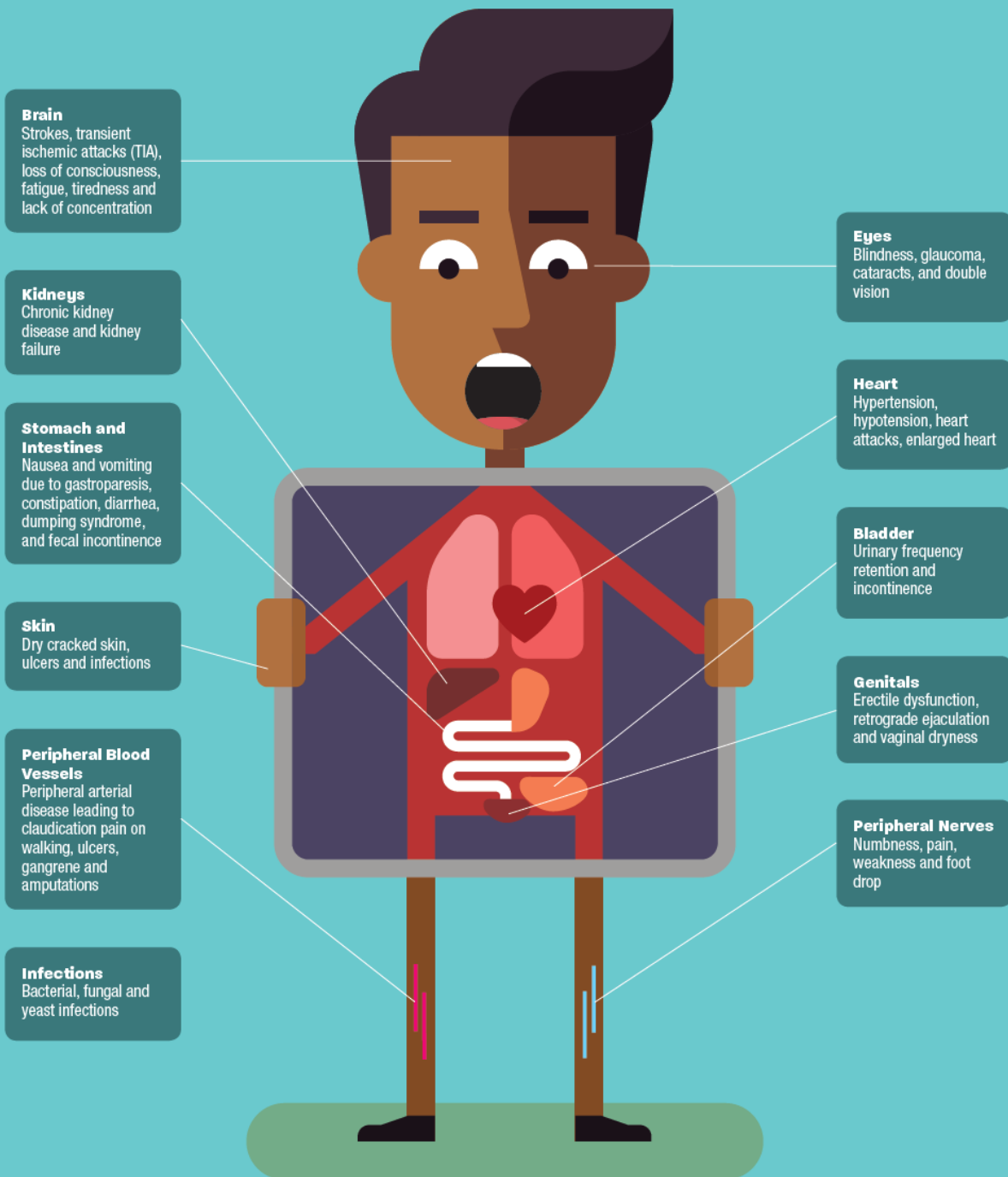


SOURCE: United States Census Bureau, Current Population Survey, Annual Social and Economic Supplements.

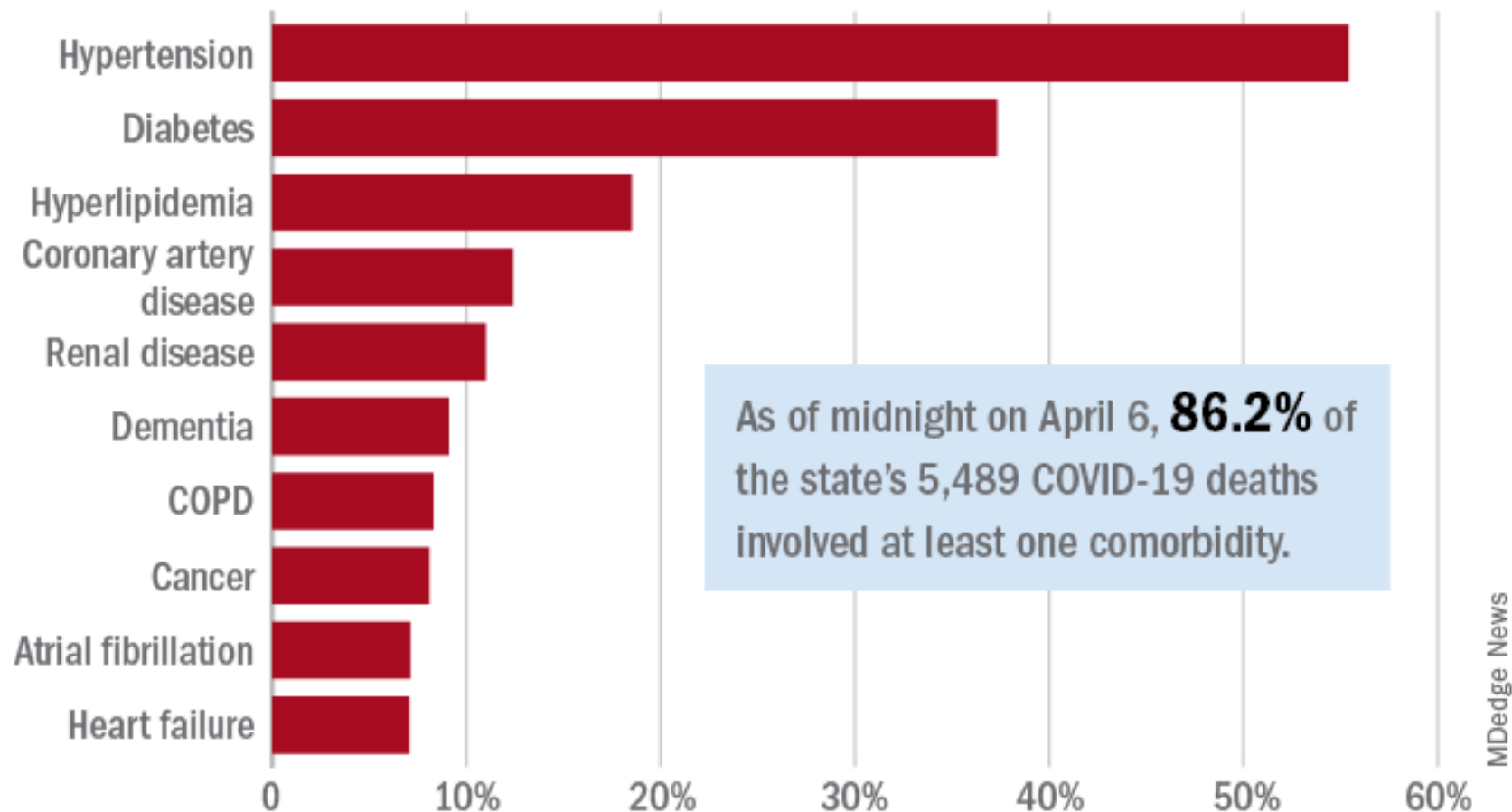
© 2019 Peter G. Peterson Foundation

PGPF.ORG

# Diabetes can damage many parts of the body



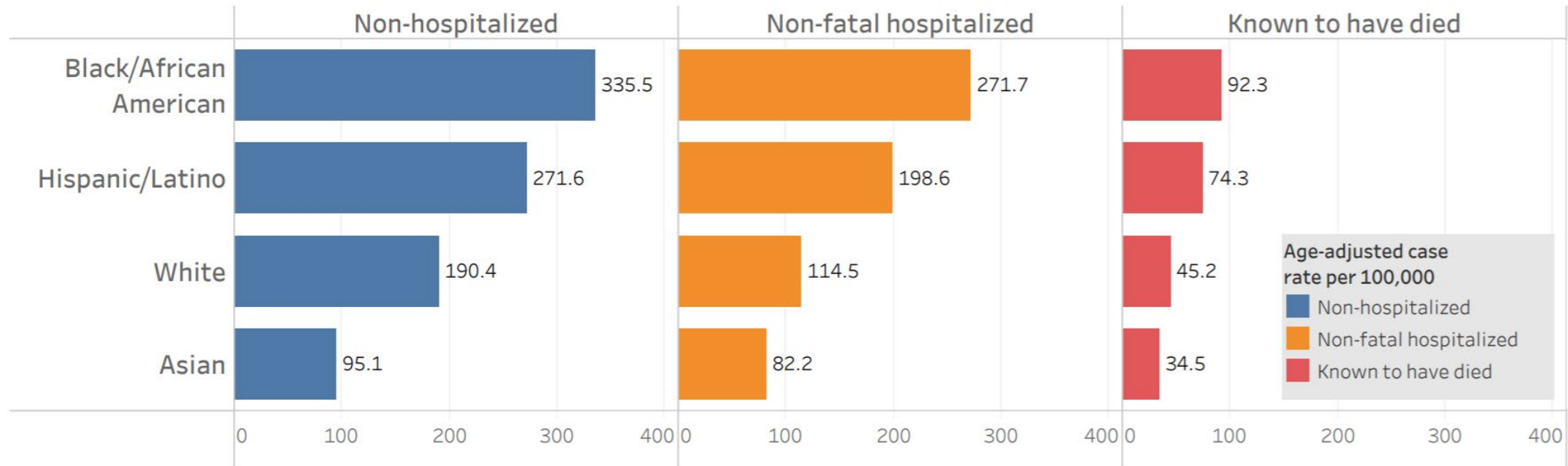
## Leading comorbidities among COVID-19 deaths in New York

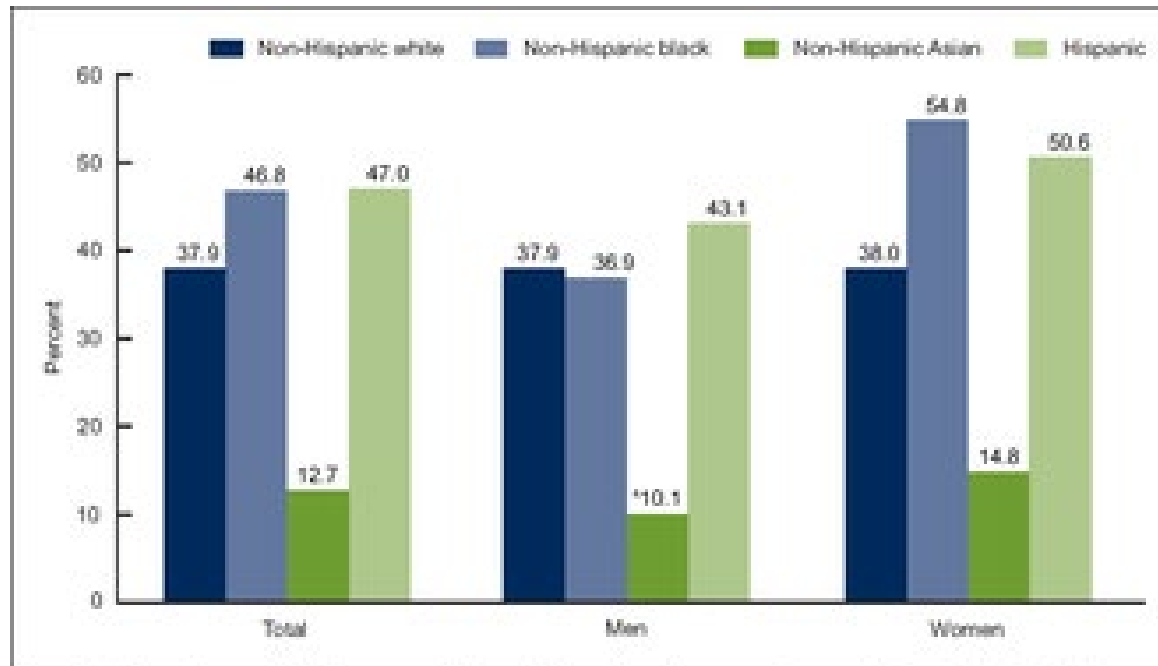


**Note:** Data reported on a daily basis by hospitals, nursing homes, and other health care facilities.

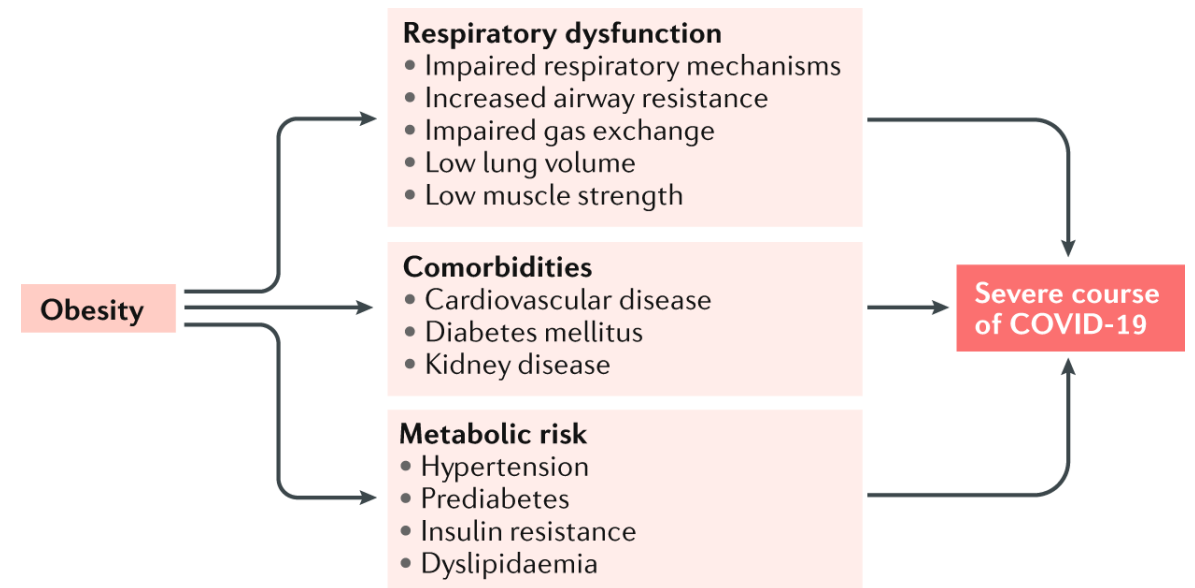
**Source:** New York State Department of Health

Age-adjusted rates of lab confirmed COVID-19 non hospitalized cases, estimated non-fatal hospitalized cases, and patients known to have died 100,000 by race/ethnicity group as of April 16, 2020





Age-adjusted prevalence of obesity among adults aged 20 and over, by sex and race and Hispanic origin: United States, 2015–2016





**Actions  
Employers Can  
Take**

---

**Time off**

---

**Wellbeing**

---

**Access to affordable healthcare**

---

**Financial Benefits**

---

**Other Benefits**

---

**Leverage Data**

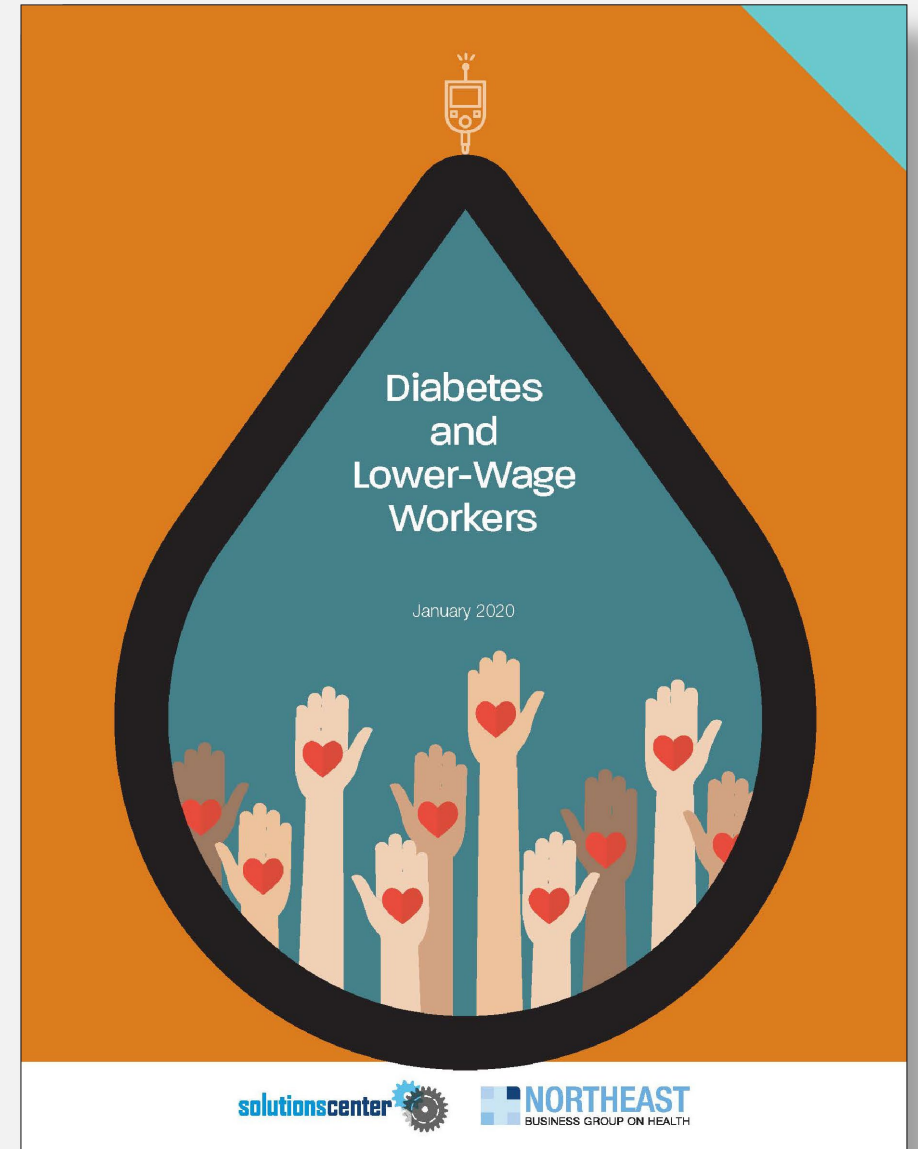
# Actions that employers can take to support lower wage workers during the COVID-19 pandemic

- Challenges:
  - Often lower wage workers in roles that cannot be done from home
  - May have less PTO
  - Increased use of public transport
  - Living conditions may make social distancing harder
  - Ensuring there is no discrimination
- Actions:
  - Flexibility with work schedules
  - Provision of PPE
  - Commuting assistance
  - Caregiving benefits
  - Access to telemedicine
  - Education on staying safe
  - Ensure they have their flu vaccine and regular screenings

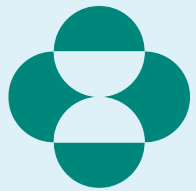


**Have a question?  
Use the Q&A box!**

**Read the full results!**



# Thank you!



**MERCK**

INVENTING FOR LIFE

