



COVID-19 Update

Dr Mark Cunningham-Hill
Medical Director NEBGH

Monday January 11th, 2021

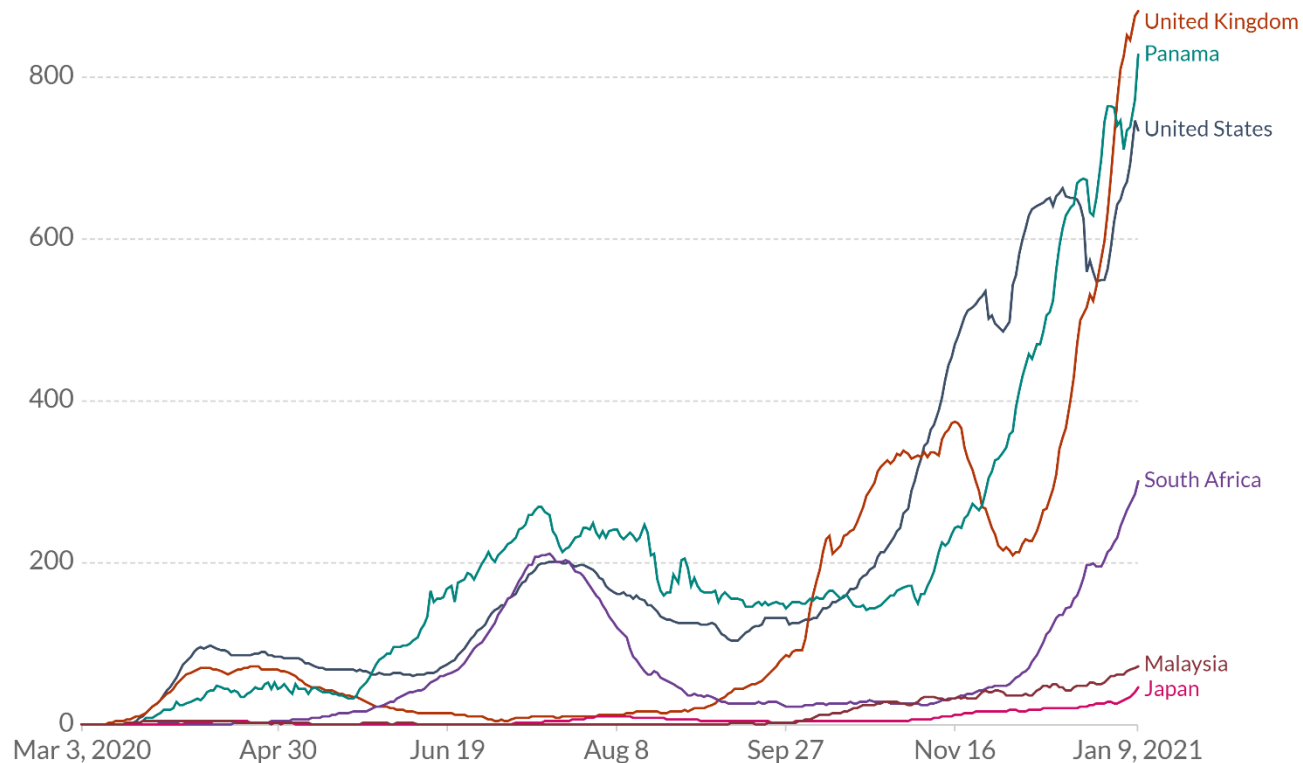




Daily new confirmed COVID-19 cases per million people

Shown is the rolling 7-day average. The number of confirmed cases is lower than the number of actual cases; the main reason for that is limited testing.

Our World
in Data



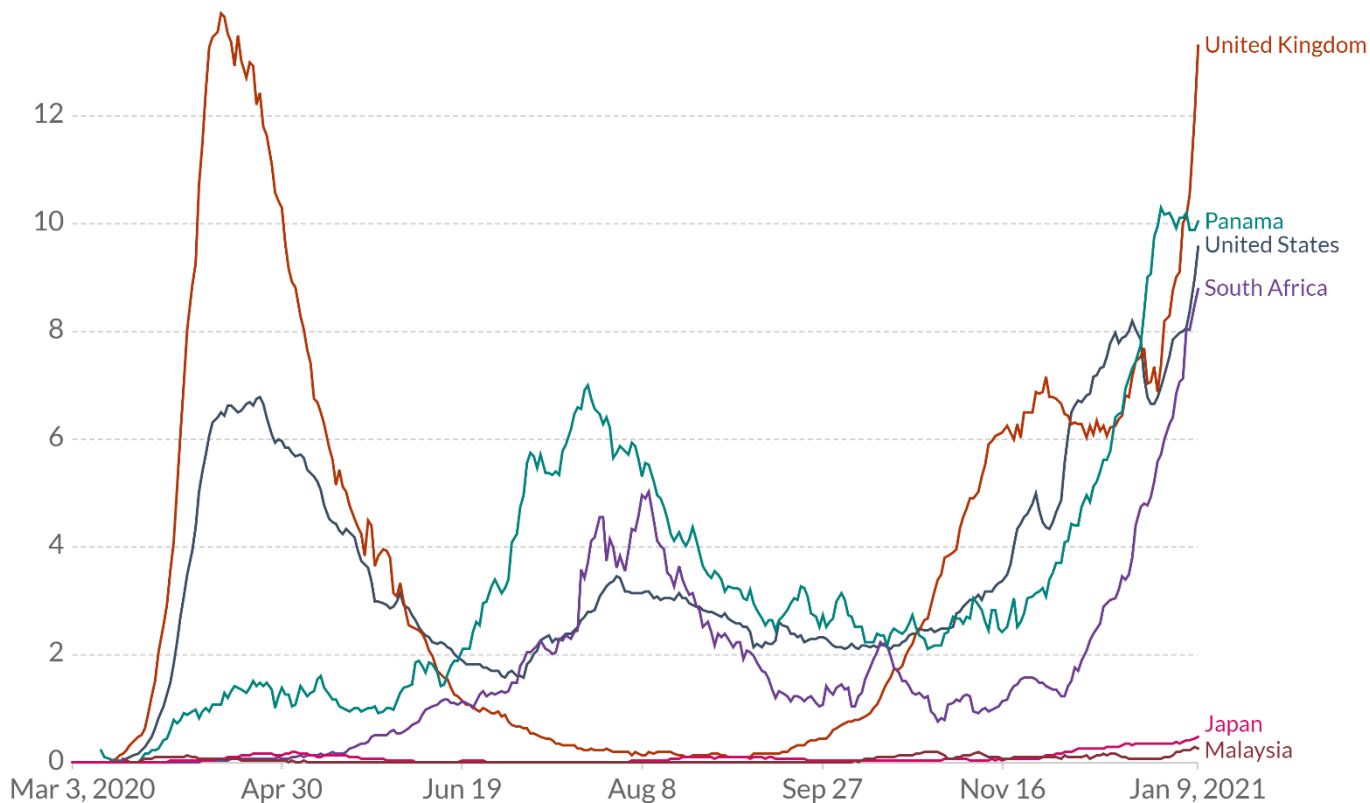
Source: Johns Hopkins University CSSE COVID-19 Data – Last updated 10 January, 11:02 (London time)

CC BY

Daily new confirmed COVID-19 deaths per million people

Our World
in Data

Shown is the rolling 7-day average. Limited testing and challenges in the attribution of the cause of death means that the number of confirmed deaths may not be an accurate count of the true number of deaths from COVID-19.

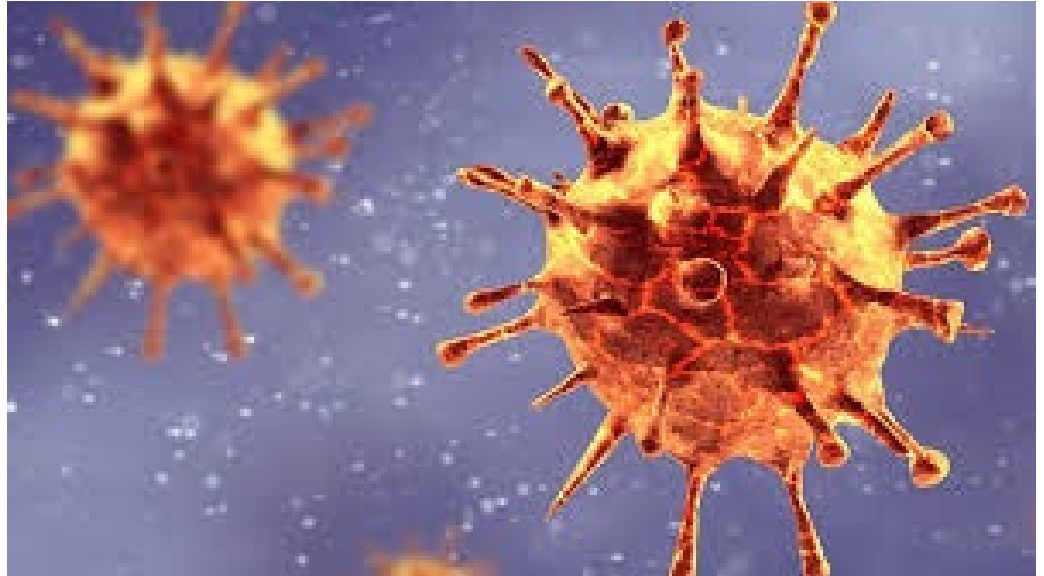


Source: Johns Hopkins University CSSE COVID-19 Data – Last updated 10 January, 11:02 (London time)

CC BY

New Variants

- B.1.1.7 – UK
- B.1.351 – South Africa
- Maybe another one in US



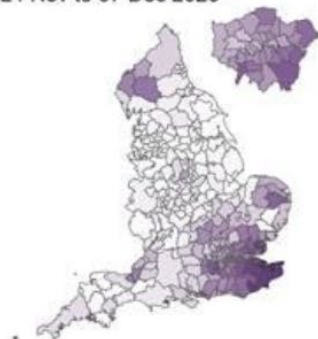
Spread of New Variant in England

Proportion of Pillar 2 COVID-19 cases with SGTF among those tested in TaqPath Labs, by Local Authority

10 Nov to 23 Nov 2020



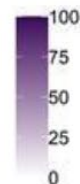
24 Nov to 07 Dec 2020



08 Dec to 21 Dec 2020



22 Dec to 04 Jan 2021



[https://assets.publishing.service.gov.uk/government/uploads/system/uploads/attachment_data/file/950823/Variant_of_Concern_VOC_202012_01_Technical_Briefing_3 - England.pdf](https://assets.publishing.service.gov.uk/government/uploads/system/uploads/attachment_data/file/950823/Variant_of_Concern_VOC_202012_01_Technical_Briefing_3_-_England.pdf)



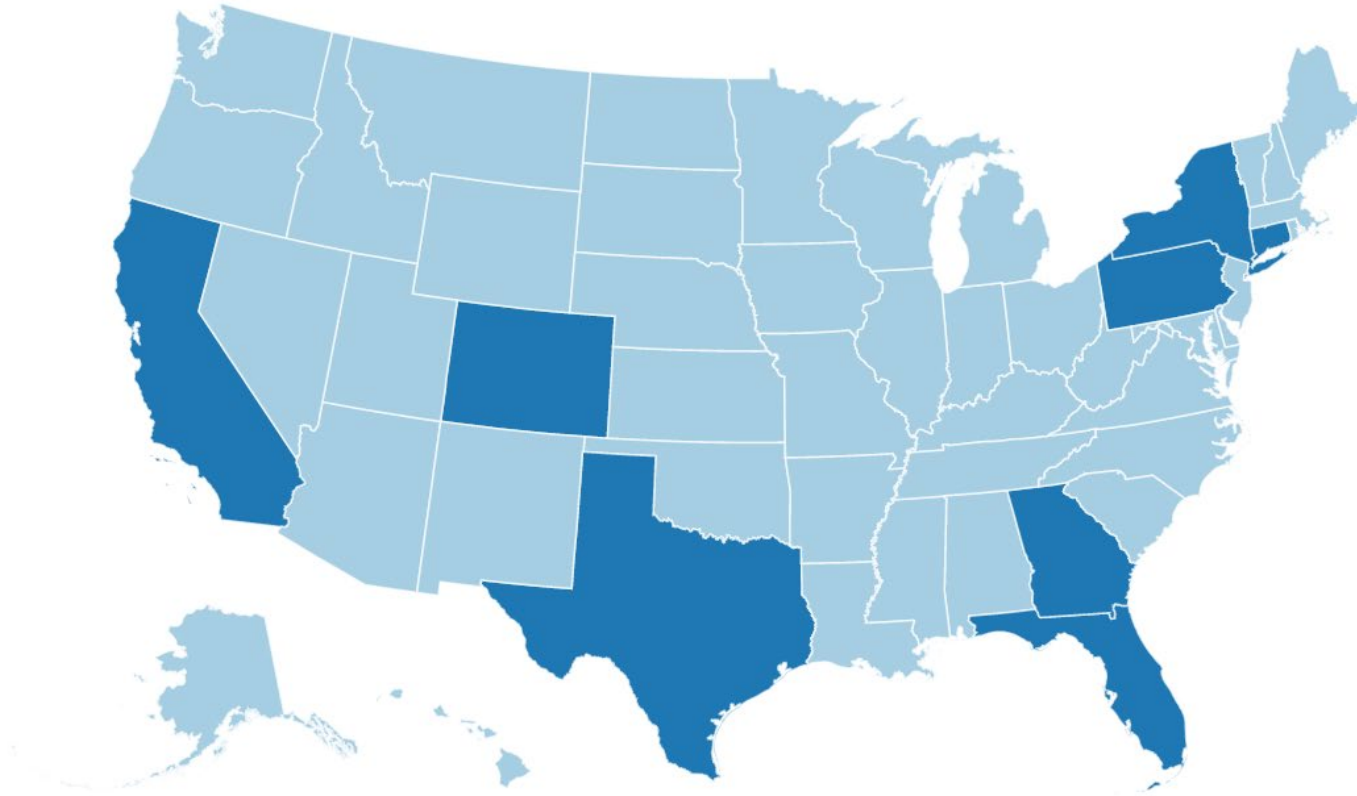
UK Variant

- Attack Rates 10%-70% higher¹
- Attack rates are higher in children especially 0-9 years
- Adds +0.4 to +0.7 to R_t/R_0 ²

[1. https://assets.publishing.service.gov.uk/government/uploads/system/uploads/attachment_data/file/950823/Variant_of_Concern_VOC_202012_01_Technical_Briefing_3_-_England.pdf](https://assets.publishing.service.gov.uk/government/uploads/system/uploads/attachment_data/file/950823/Variant_of_Concern_VOC_202012_01_Technical_Briefing_3_-_England.pdf)

[2. https://www.ssi.dk/aktuelt/nyheder/2021/spredning-af-den-engelske-virusvariant_5_1_2021](https://www.ssi.dk/aktuelt/nyheder/2021/spredning-af-den-engelske-virusvariant_5_1_2021)

B.1.1.7 Lineage Cases in the United States*† Total Cases: 63



Territories

AS

GU

MH

FM

MP

PW

PR

VI



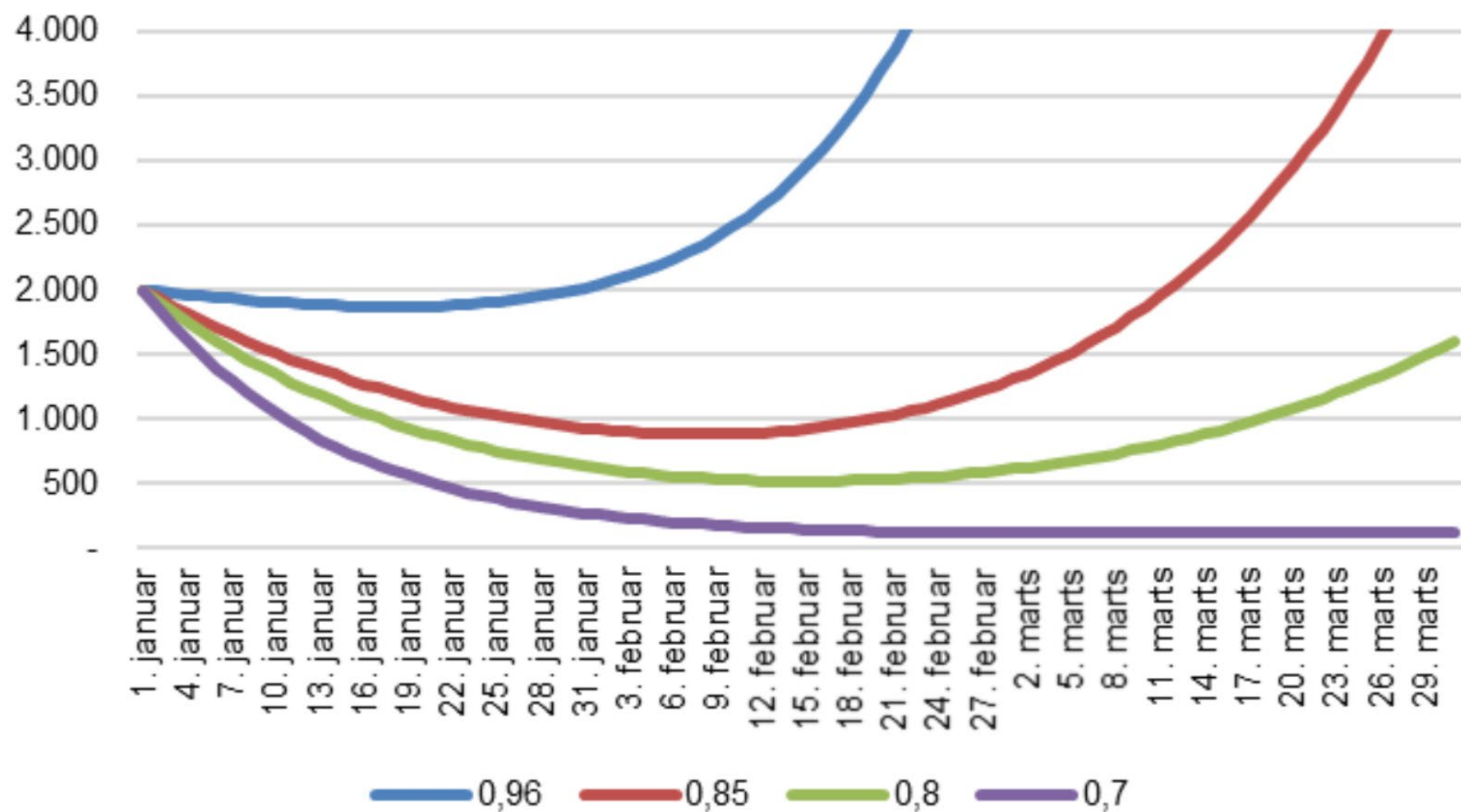
Daily new confirmed COVID-19 cases per million people

Shown is the rolling 7-day average. The number of confirmed cases is lower than the number of actual case main reason for that is limited testing.



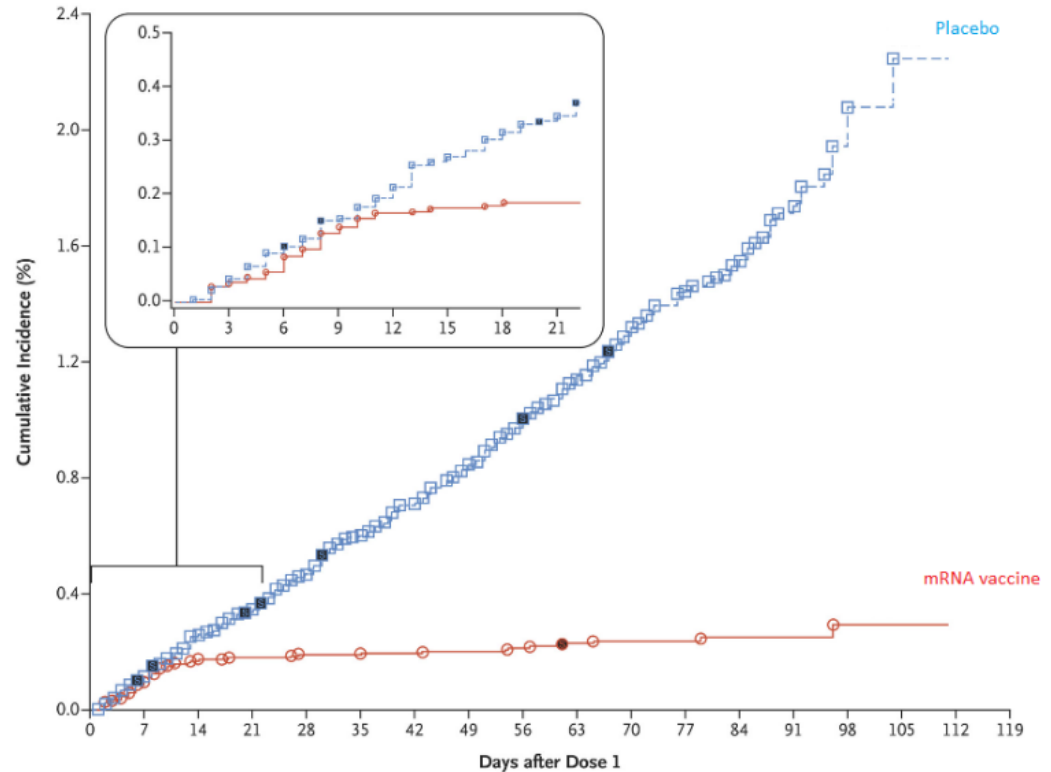
Source: Johns Hopkins University CSSE COVID-19 Data – Last updated 10 January, 11:02 (London time)

CC BY



UK Approach

- Pfizer-BioNtech vaccine schedule is for second dose 21 days after the first dose
- UK are delaying second dose to 12 weeks with aim of vaccinating more people with at least one dose to minimize death toll
- They are also saying if needed can mix-n-match vaccines





Biden Administration

- Considering not holding in reserve second doses but go ahead and vaccinate as many as possible:
 - Impact spread and new case rates
 - Protect healthcare systems from overload
- However, different from the UK as not planning to delay administration of the second dose – improving supplychain a key factor





NEWS

HOT
OFF
THE
PRESS

NY Vaccine Strategy

- NYS Updated Vaccine Strategy
 - High risk HCW
 - All who have patient contact
 - Nursing homes
 - Over 75
 - Police, fire, correctional staff, teachers, in-person university lecturers, grocery employees.....
 - 1a and 1 b – no details on 1c



<https://covid19vaccine.health.ny.gov/phased-distribution-vaccine>



Questions