

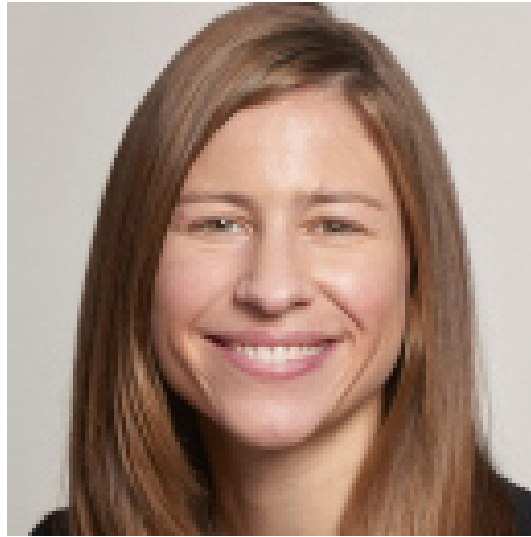


COVID-19 Update

Dr Mark Cunningham-Hill
Medical Director NEBGH



Monday February 22nd , 2021



Dr. Lindsay Jubelt

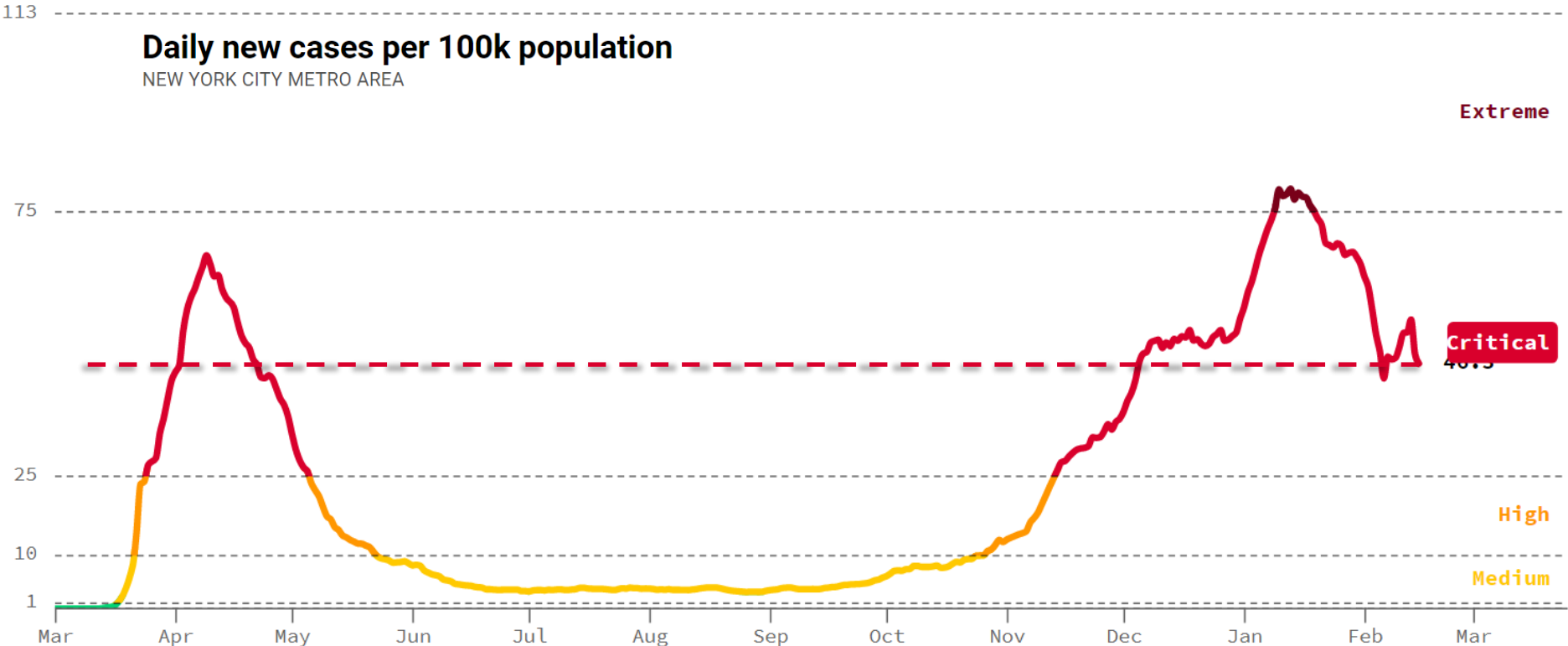
Chief Population Health Officer at Mass
General Brigham

Chief Medical Officer, AllWays Health Partners

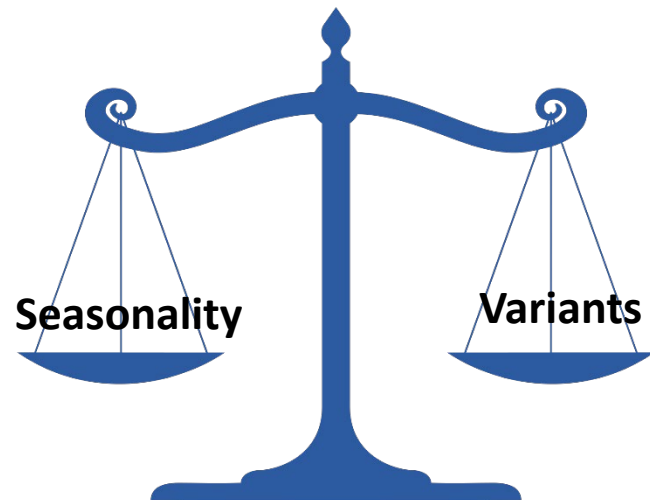
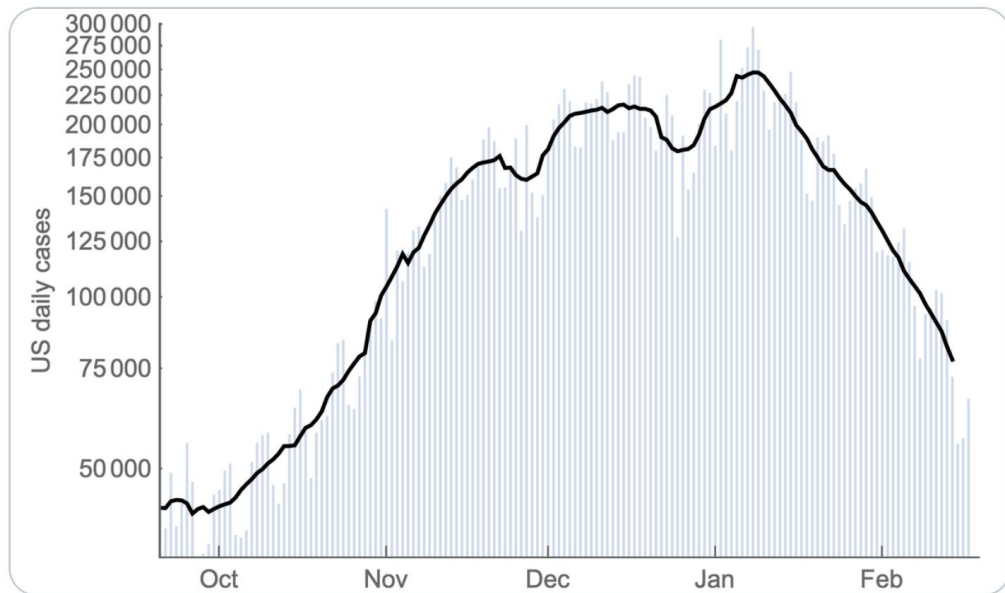
Where we are today in NYC

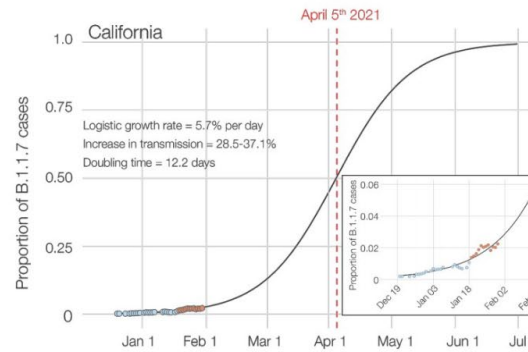
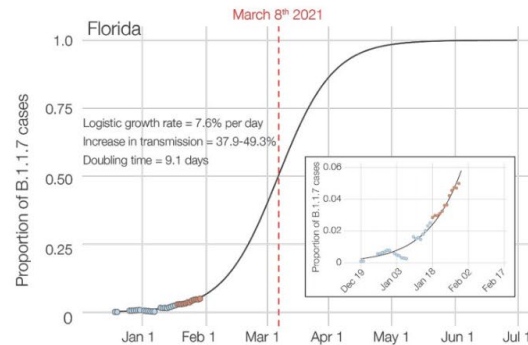
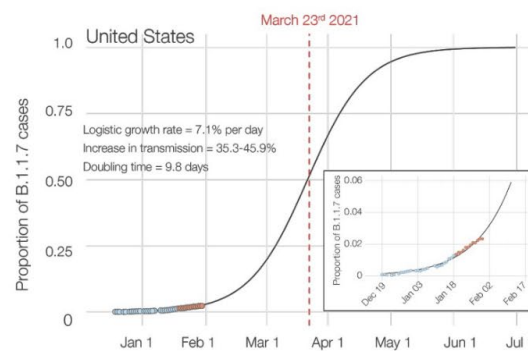
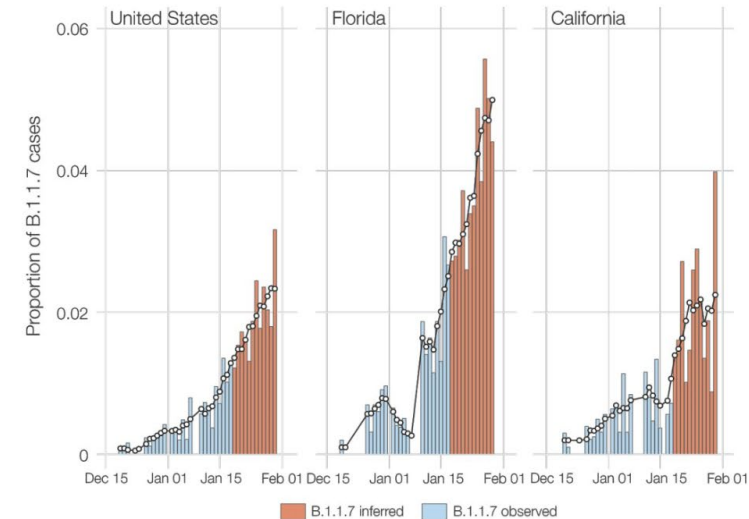
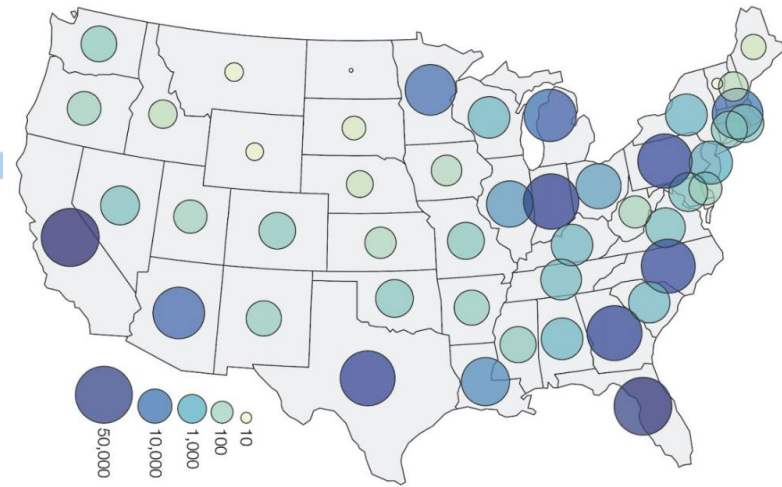
Daily new cases per 100k population

NEW YORK CITY METRO AREA



Where are we going?

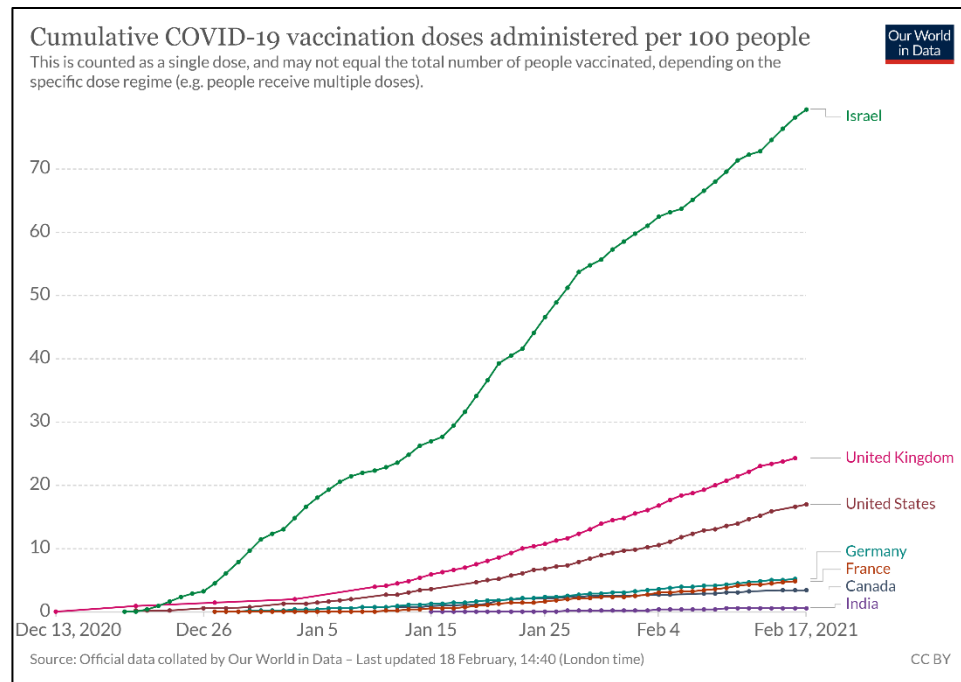




- B.1.1.7 growth curves like UK and EU's
- B.1.1.7 may become dominant in some areas of the US earlier than other areas
- Increased transmissibility of B.1.1.7 will make it harder to bring under control
- Exactly when and how big a spring wave will be is unknown

Israel – Vaccine Case Study

- Leading the world in vaccine roll out
- Started Dec. 19 - elderly, hi-risk medical conditions, emergency workers, and pregnant women
- BioNTech-Pfizer mRNA vaccine
- 40% of the country's population received 1 dose, >28% 2 doses.
- Over 60 >80% vaccinated
- Anyone over the age of 16 can be vaccinated immediately



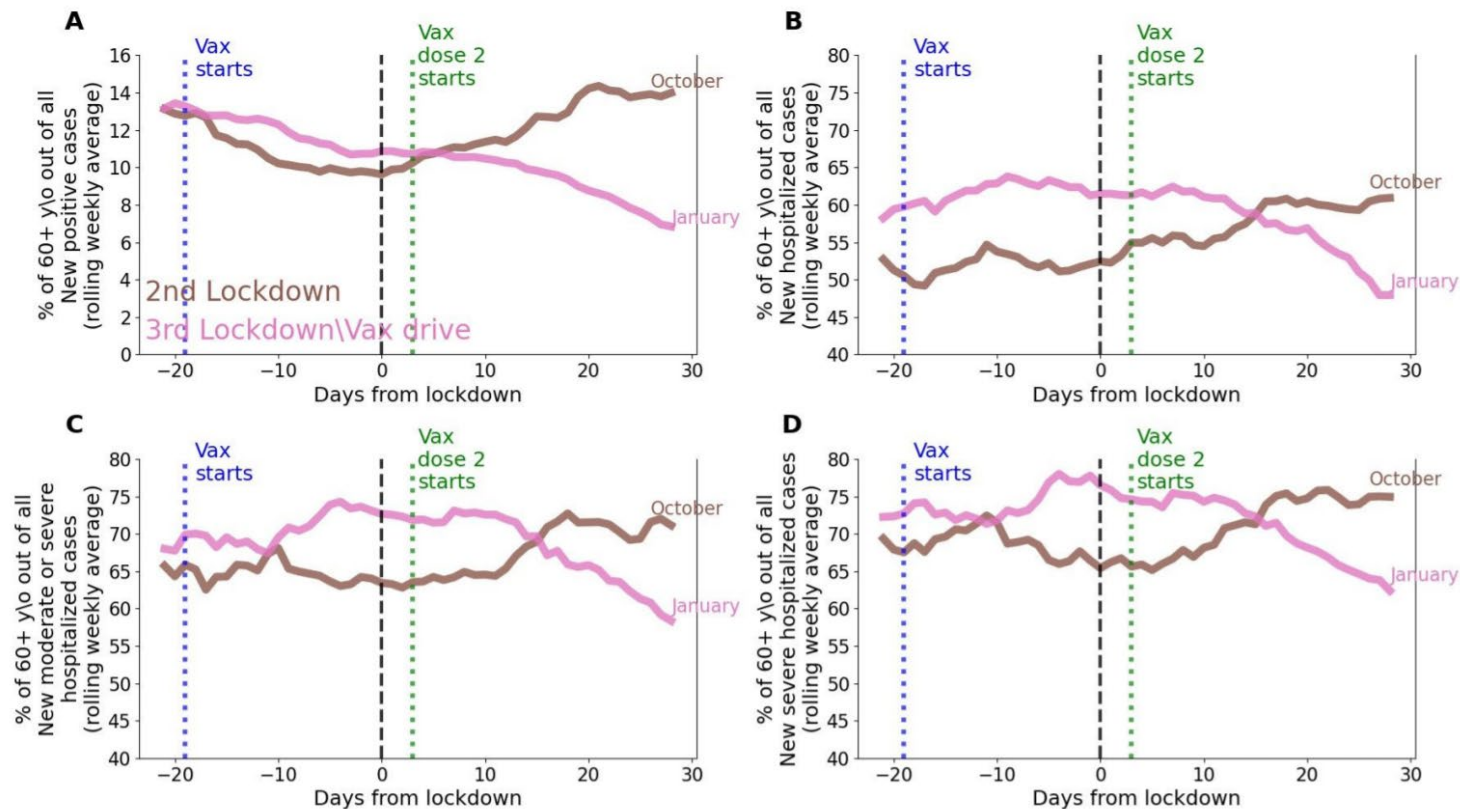


Fig. 3. Percentage of people over 60 years old from all ages before and after the 2nd lockdown (brown line) and 3rd lockdown (pink line). Lockdown start date for both lockdowns is “Day 0” and is shown as a dashed black line. Vaccination start date is shown relative to the 3rd lockdown start as a blue dotted line (first dose) and as green dotted line (second dose). **A.** New cases. **B.** New mild, moderate or severe hospitalizations. **C.** new moderate or severe hospitalizations **D.** New severe hospitalizations.





Israel - Studies

- 94% drop in symptomatic illness and 92% less likely to develop severe illness after 2 doses of Pfizer-BioNTech vaccine¹
- A single shot of the vaccine is 85% effective in preventing symptomatic disease and 75% asymptomatic infection 15 to 28 days after being administered²

1. <https://www.reuters.com/article/uk-health-coronavirus-israel-vaccine/israeli-study-finds-94-drop-in-symptomatic-covid-19-cases-with-pfizer-vaccine-idUSKBN2AE0Q0>
2. <https://thehill.com/policy/healthcare/539545-pfizer-vaccine-85-percent-effective-after-first-dose-israeli-study-finds>

Green Badge/Passport



Israel's Green Passports Enable Access To:

<input type="checkbox"/> Restaurants	<input type="checkbox"/> Swimming Pools
<input type="checkbox"/> Cafes	<input type="checkbox"/> Conferences
<input type="checkbox"/> Malls	<input type="checkbox"/> Museums
<input type="checkbox"/> Hotels	<input type="checkbox"/> Cultural Events
<input type="checkbox"/> Gyms	<input type="checkbox"/> Sporting Events



INTERNATIONAL CERTIFICATE* OF VACCINATION OR PROPHYLAXIS

This is to certify that [name] / Nous certifions que [nom]
date of birth / nés le sex / de sexe
nationality / et de nationalité
national identification document, if applicable / document d'identification
whose signature follows / dont la signature suit

has on the date indicated been vaccinated or received prophylaxis against: (name of disease or condition) / a été vacciné(e) ou a reçu des agents prophylactiques à la date indiquée contre: (nom de la maladie ou de
disease with the International Health Regulations. / en vertu du Règlement sanitaire international.

Vaccine or prophylaxis Vaccin ou agent prophylactique التلقيح أو وسيلة الوقاية	Date (date) التاريخ	Signature and professional status of supervising clinician Signature et titre du clinicien responsable توقيع المسؤول السريري المشرف ووظيفته
COVID-19	19-12-2020	

Manufacture and batch no. of vaccine or prophylaxis
Fabrication du vaccin ou de l'agent prophylactique et numéro du lot
وسيلة الوقاية ورقم الترخيل

Certificate valid from:
Certificat valable à partir de:
Jusqu'à:
هذه الشهادة صالحة من حتى

Official stamp + administrative
Cachet officiel du habilité
م الرسمي لمركز التطعيم

ISRAELI HEALTH MIN. UNVEILS COVID-19 GREEN PASSPORT APP



Mass General Brigham

Fall 2021: Vaccines for Children and School Readiness

Lindsay Jubelt, MD

February 2021

Timeline for vaccines for children

Pfizer

- Currently approved for ages 16 and older
- Vaccine trial for kids aged 12-15 is fully enrolled
- By sometime in fall 2021, should have results of the trial
- Studies for children <12 likely wouldn't be completed until 2022

Moderna

- Currently approved for ages 18 and older
- Moderna is currently enrolling children aged 12-17 into a trial but it's been slower than hoped

Why are vaccines for children important?

- While children tend to get less sick than adults, 2% of children who get COVID require hospital care
- It's likely that children will also need to be vaccinated in order for the United States to approach herd immunity



Rationale for reopening schools

To improve student achievement

- While most students showed growth in both reading and math achievement since the onset of COVID-19 disruptions, growth in math was lower than in a typical year

To reduce education inequality

- The absence of in-person educational options may disadvantage children from low-resourced communities, which may include large representation of racial and ethnic minority groups

To provide childcare so parents can work

- Parents struggle to work with their children at home due to school closures



CDC guidelines for reopening schools

- **Elementary schools** -- With proper mitigation, such as masking, physical distancing and hygiene, schools can operate in person at any level of community virus transmission.
- **Middle and high schools** can safely operate in person at all but the highest level of transmission. Highest level of transmission is defined as:
 - When 10 percent or more of the coronavirus tests in a community come back positive over a seven-day period
 - When there are 100 or more virus cases per 100,000 people in the community over seven days.
- At higher levels of community spread, all schools reduce attendance by having students come to class on different days or by having some groups of students learn virtually.



Drivers of remote learning

Two core pillars in the document may keep schools closed or in hybrid mode for longer:

1. **Community Transmission Rates** -- Schools should decide whether to open based on community transmission
2. **Social Distancing** -- Students should strive to be spaced 6 feet apart

There will continue to be variation in adherence to guidelines and schools openings across the country for fall 2021.



Implications for schools

Potential Implications on School Resources

- Smaller classes to accommodate social distancing
 - Hire more teachers to ensure appropriate class sizes
 - Reassign specialized teachers to be generalists
 - Reallocate school spaces to be classrooms
- Double busing and hire more bus drivers

Heterogeneity of School Experience across the Country

- Rural schools may have more space and more easily adopt to guidelines
- Urban settings may have more trouble adhering to guidelines and may be more likely to do hybrid learning. May drive some parents out of public and into private schools.



Download NEBGH's newest guide!

www.nebgh.org





Questions

Upcoming NEBGH virtual events:

- **Feb. 23:** Bicoastal Benefits Leaders' Coffee Talk featuring Marco Diaz
- **Feb. 25:** Black History, Health Disparities and "The Fierce Urgency of Now"
- **Mar. 1:** Weekly Monday COVID-19 Update w/ Dr. Chaguturu