

COVID-19 Update

Dr Mark Cunningham-Hill

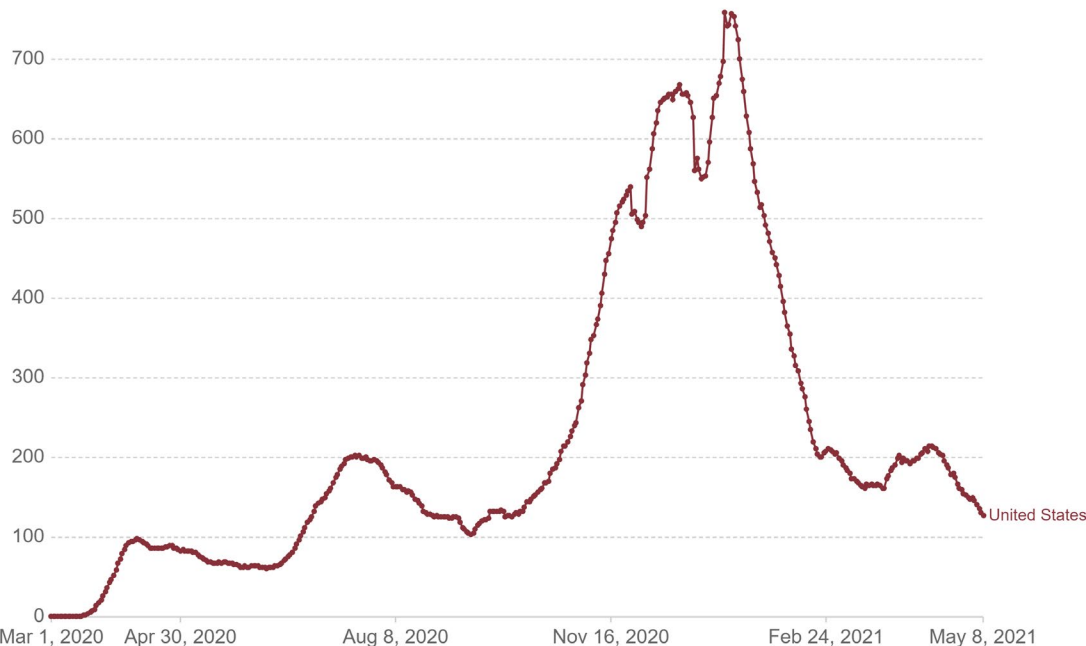
Medical Director NEBGH

Monday May 10th, 2021

US Continues to Improve

Daily new confirmed COVID-19 cases per million people

Shown is the rolling 7-day average. The number of confirmed cases is lower than the number of actual cases; the main reason for that is limited testing.



Source: Johns Hopkins University CSSE COVID-19 Data

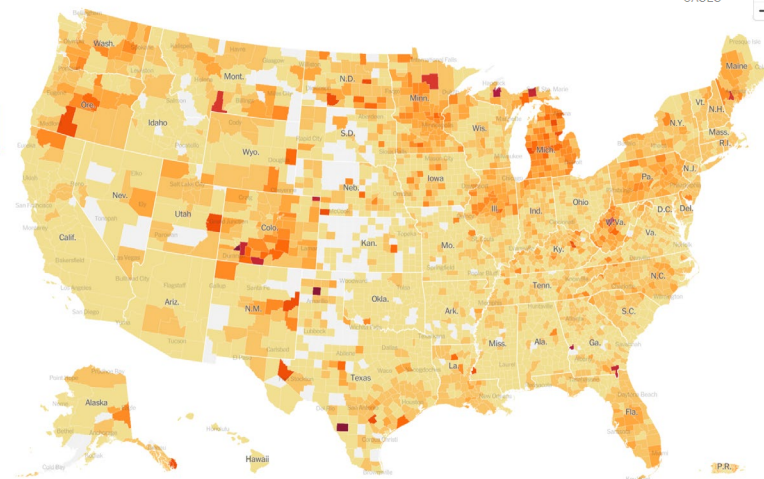
BUSINESS GROUP ON HEALTH

Our World
in Data

Hot spots

AVERAGE DAILY CASES PER 100,000 PEOPLE IN PAST WEEK

10 30 50 70 100 250 FEW OR NO CASES



	AVG. ON MAY 8	14-DAY CHANGE
Cases	42,097	-29%
Hospitalized	39,078	-14%
Deaths	675	-6%

34% Fully Vaccinated
46% had 1 dose

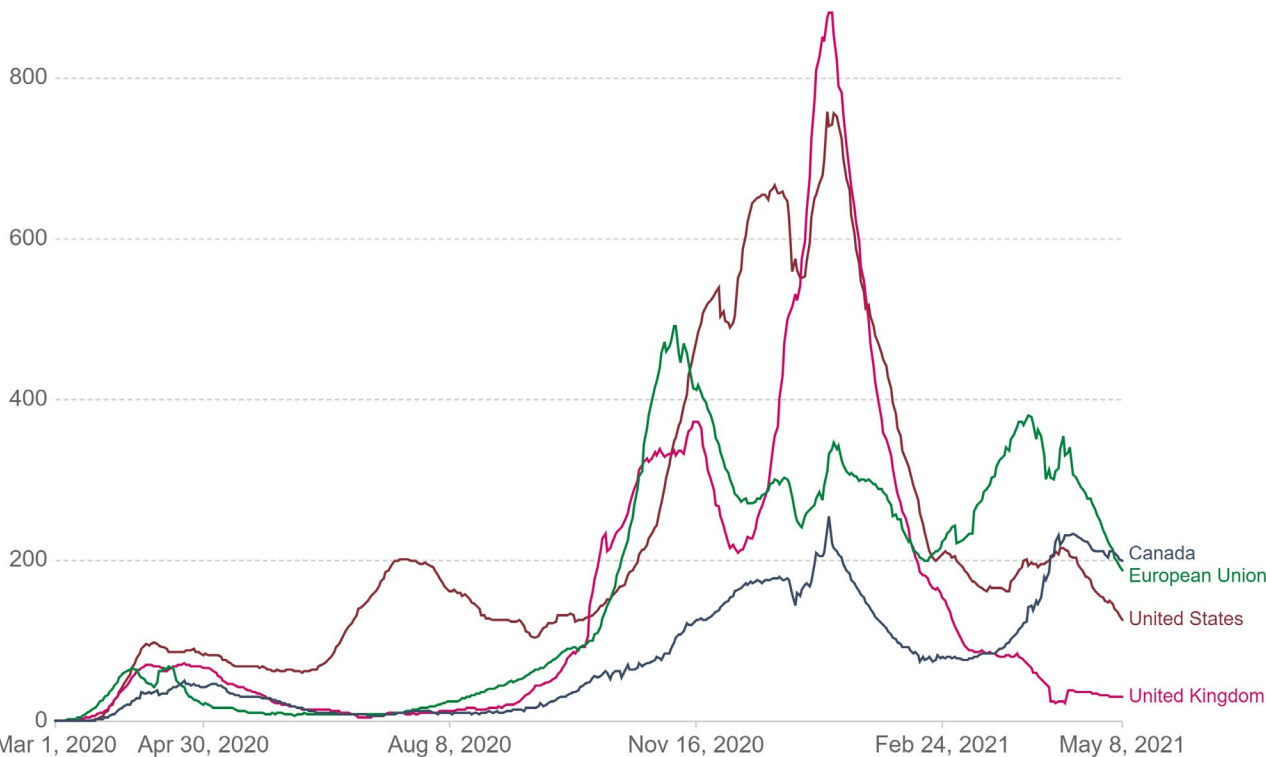
CC BY

How Does the USA Compare?

Daily new confirmed COVID-19 cases per million people

Shown is the rolling 7-day average. The number of confirmed cases is lower than the number of actual cases; the main reason for that is limited testing.

Our World
in Data





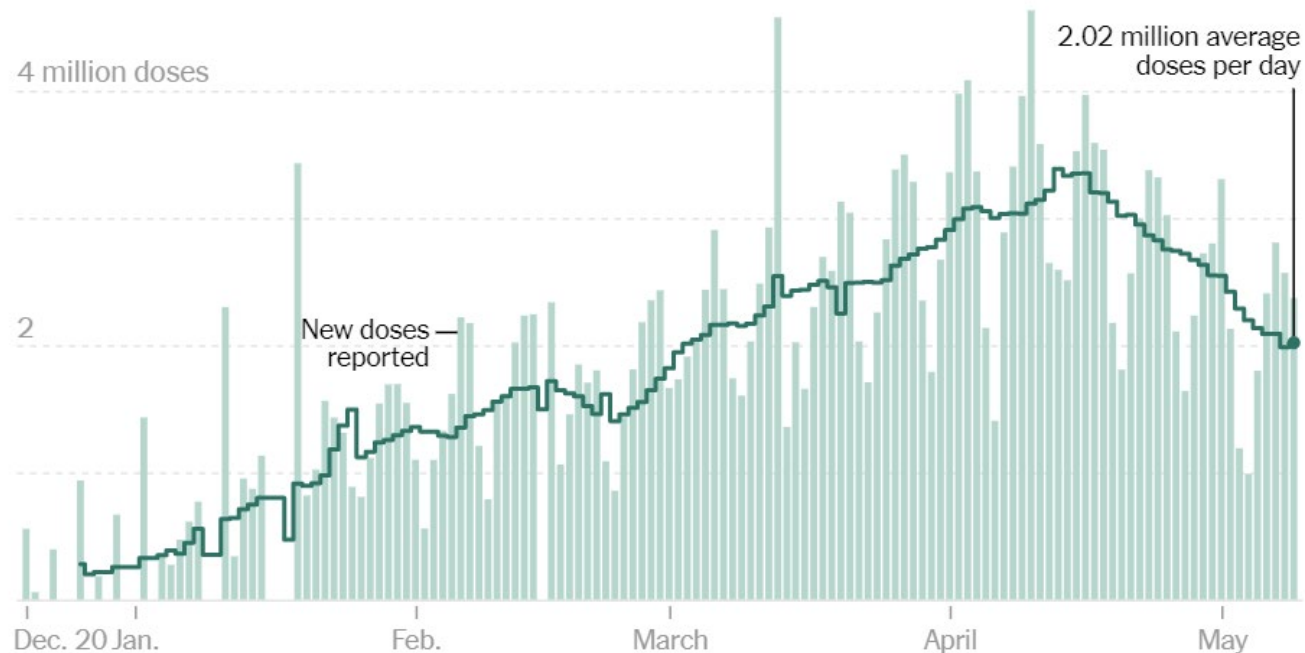
What to be aware of as potential future risks



- Vaccine hesitancy
- Pandemic fatigue
- Waning immunity
- Variants
- Seasonality

Vaccination

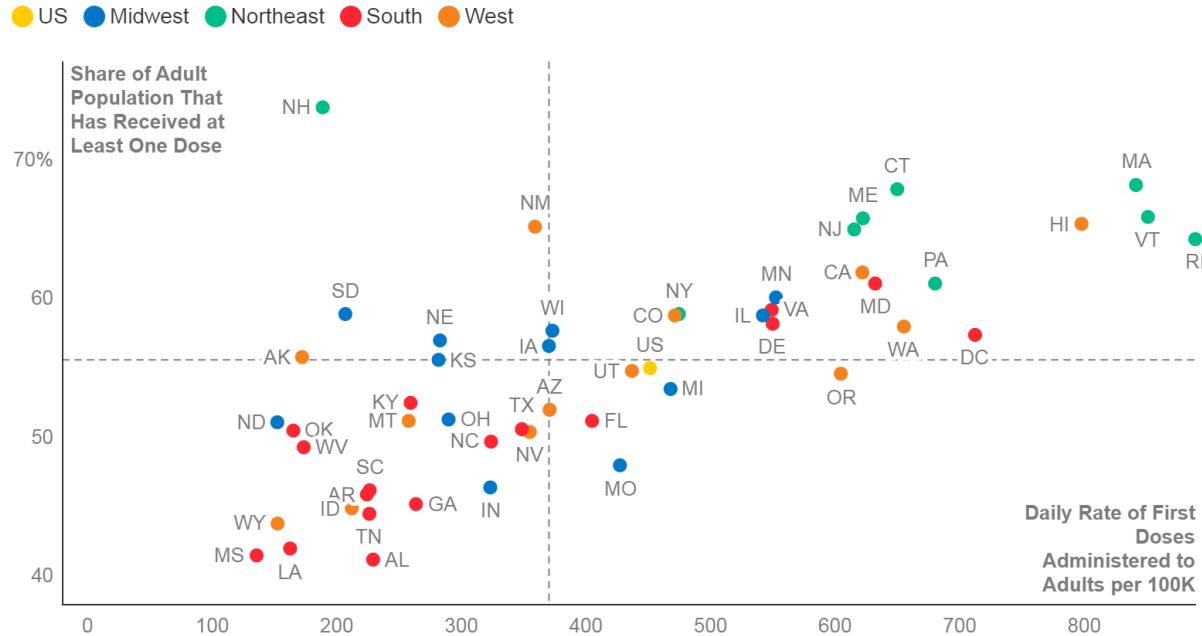
New reported doses administered by day



Source: Centers for Disease Control and Prevention | Note: Line shows a seven-day average. Data not updated on some weekends and holidays. Includes the Johnson & Johnson vaccine as of March 5.

Vaccination

Share of Adult Population That Has Received at Least One Dose v. Daily Rate of First Doses Administered by State



NOTE: Regions based on U.S. Census regions and vaccination rate calculated using 7-day rolling average of first doses administered. Dashed lines are median values. Data updated as of April 29, 2021.

SOURCE: Johns Hopkins Centers for Civic Impact • PNG



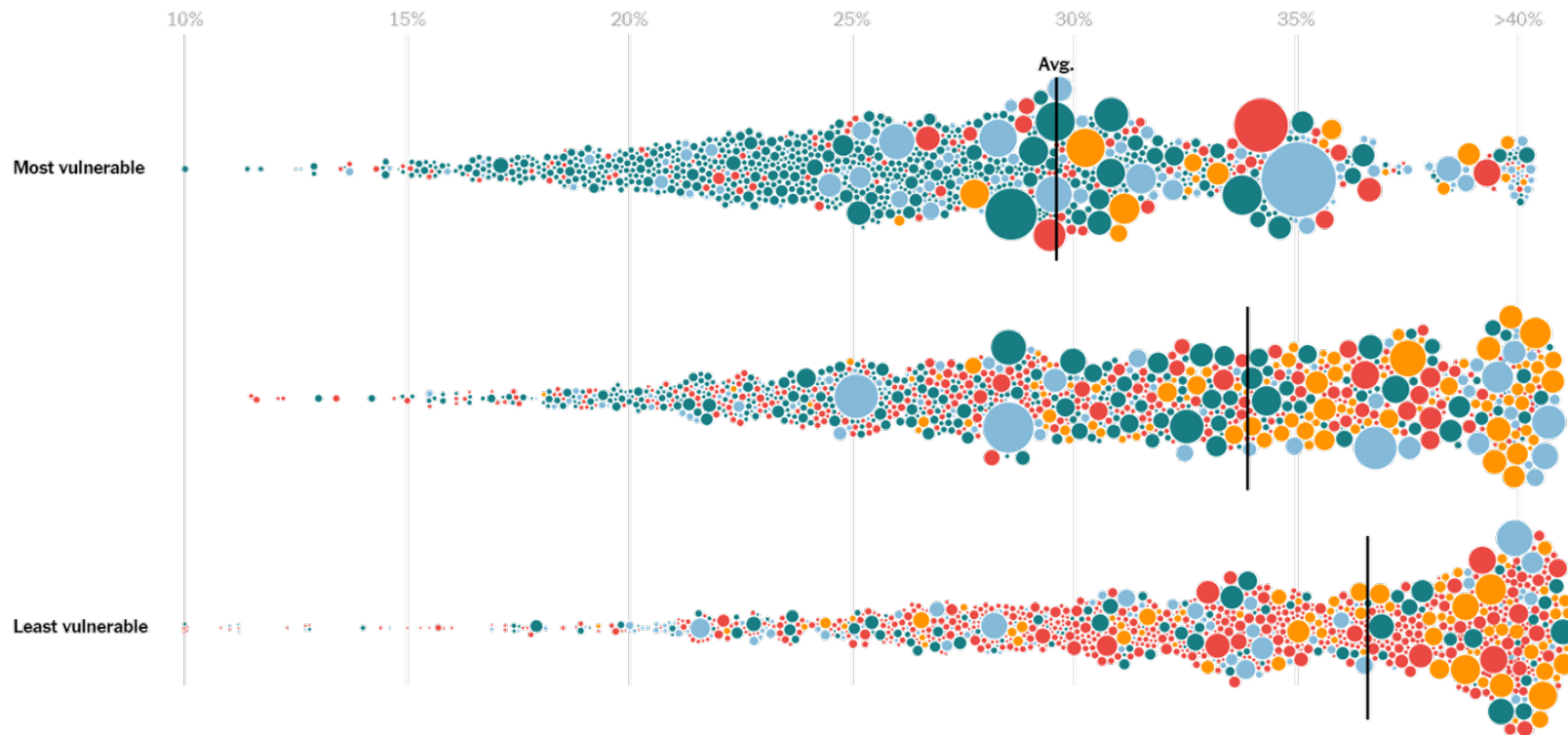
KFF <https://www.kff.org/policy-watch/supply-vs-demand-which-states-are-reaching-their-covid-19-vaccine-tipping-points/>

Vaccination

Vaccination rates by county social vulnerability

Share of total population fully vaccinated. Circles sized by county population.

Region ● West ● Midwest ● Northeast ● South



Source: [Centers for Disease Control and Prevention](#), [Texas Department of State Health Services](#), U.S. Census Bureau | Note: No C.D.C. data available for Hawaii, Texas and some counties. Colorado, Georgia, Vermont, Virginia and West Virginia were excluded because more than a quarter of data is missing.

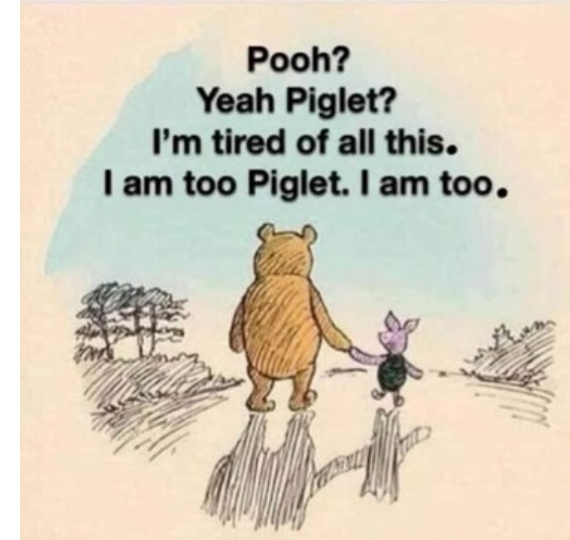
Pandemic fatigue

People

- Exhaustion, despite getting enough sleep
- Less diligence and care in COVID safety protocols
- More impatient, irritable, and easier to upset
- Feeling stressed and finding it harder to focus
- Feelings of hopelessness about the future
- Increased consumption of alcohol, substances, or food

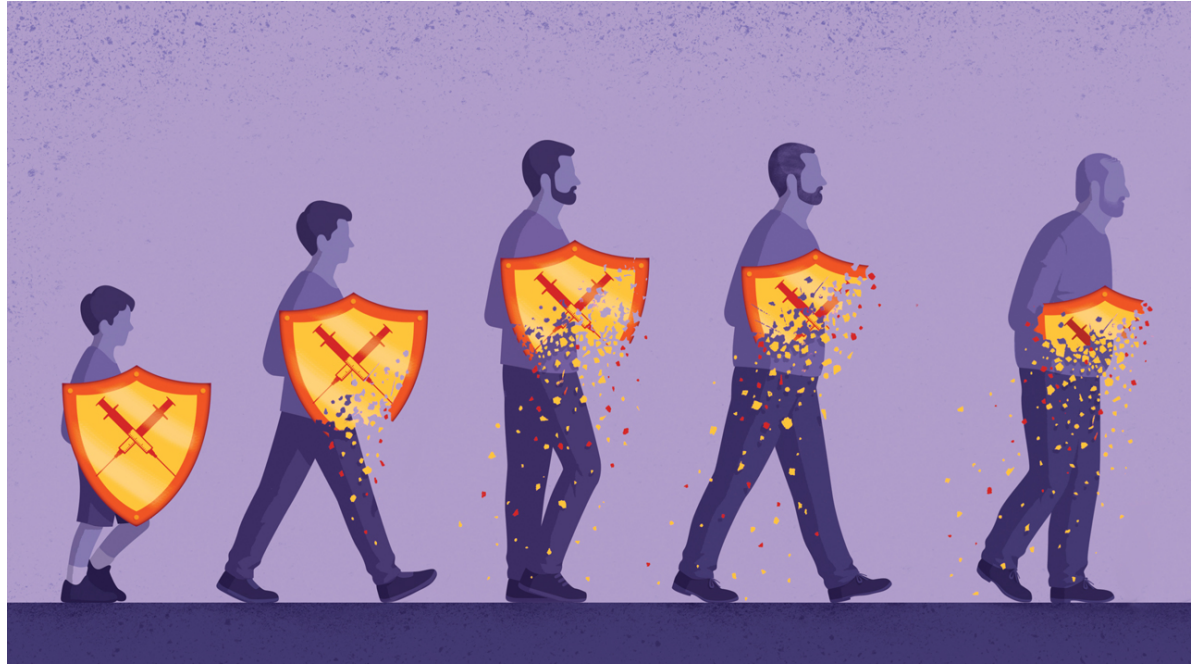
Society

- Economic
- Education
- Expectations



Waning Immunity

- Post infection or post vaccination
- In older age groups



Variants

- Variants of interest, variants of concern and variants of high consequence

Variants of Interest (Country 1 st seen)	Key Issues
B.1.526 (NYC)	↑ Ability to bind to cells ↓ Potential resistant to Antibody Rx
B.1.526.1 (NYC)	↑ Infectivity
B.1.617 (India)	So called Double mutation
B.1.617.1, B.1.617.2 and B.1.617.3 (India)	↑ spread No data on severity or immunity avoidance
P.2 (Brazil)	Worrying E484K mutation
B.1.525 (UK & Nigeria)	E484K mutation Maybe as much 8% of US cases

Variants of Concern (Country 1 st seen)	Key Issues
B.1.1.7 (UK)	50% more transmissible Evidence more severe disease 60+% of US cases Vaccines not impacted
B.1.351 (S. Africa)	50% more transmissible Impacts immunity from vaccines, Rx and infection
P.1 (Brazil)	Might escape both natural and vaccine-elicited immune responses
B.1.427 (CA)	↑ Infectivity May impact Ab RX and vaccines
B.1.429 (CA)	↑ Infectivity

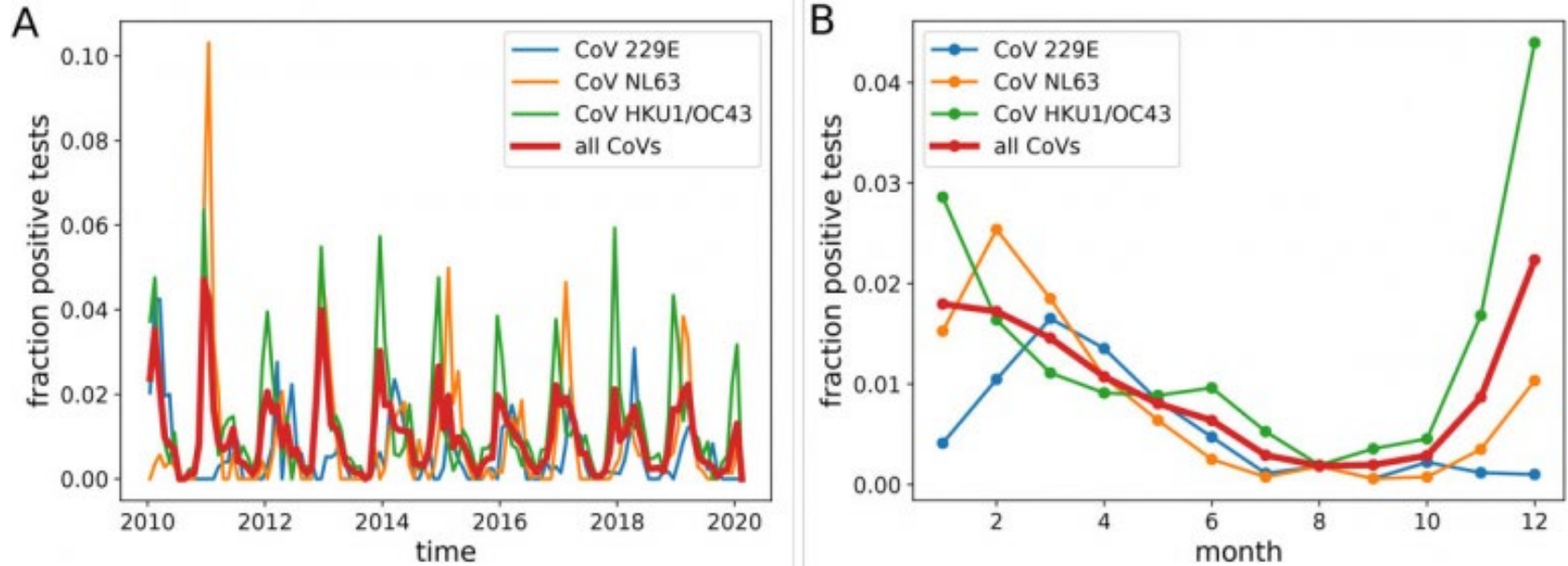
India



392K new cases per day
296% increase in 1 month



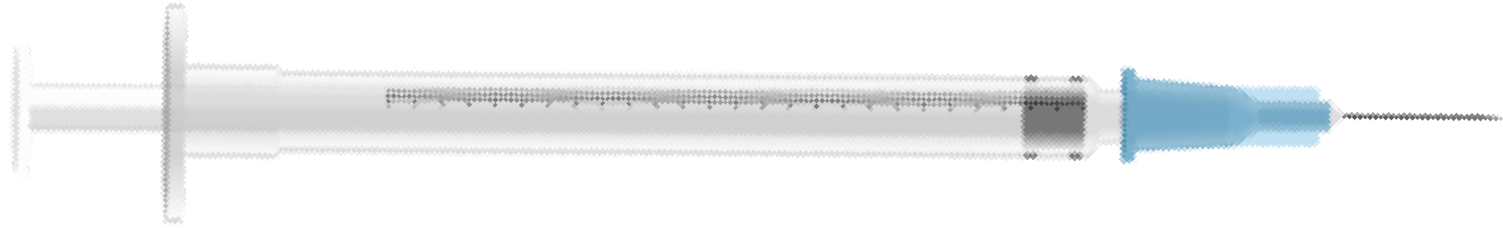
Seasonality



<https://smw.ch/article/doi/smw.2020.20224>

Seasonal Coronaviruses 2010-2020

Vaccination



Passive
Vaccine
Position

Promote
Vaccine

Strongly
Promote
Vaccine

Mandate
Vaccine

COMING SOON

**Spotlight on Employer
Approaches to Vaccination**



NYC – Private Sector Partnership



- Partnership to vaccinate employees and also improve access for communities
- Organizations will receive an allocation of Covid-19 vaccine doses and be responsible for administering them to their employees
- Some sites will be open to the public and accessible through the city's vaccine finder website
- Some companies have partnered with various nonprofits to deliver vaccine doses to underserved groups, such as homeless shelters
- The private sector will be responsible for the costs of delivering and administering the vaccines, including their transportation and refrigeration

If interested in exploring further, please Contact Douglas Land at NYC dland@edc.nyc



Questions

Upcoming NEBGH virtual events:

- **May 17:** Monday COVID-19 Update
- **Jun. 2:** Hate Crimes and Mental Health: Strategies and Resources for Employers
- **Jun. 10/17:** Where Do We Go From Here? Employee Health & Wellbeing for a New Era