



COVID-19 Update

Dr Mark Cunningham-Hill

Medical Director NEBGH

Monday, January 9, 2023

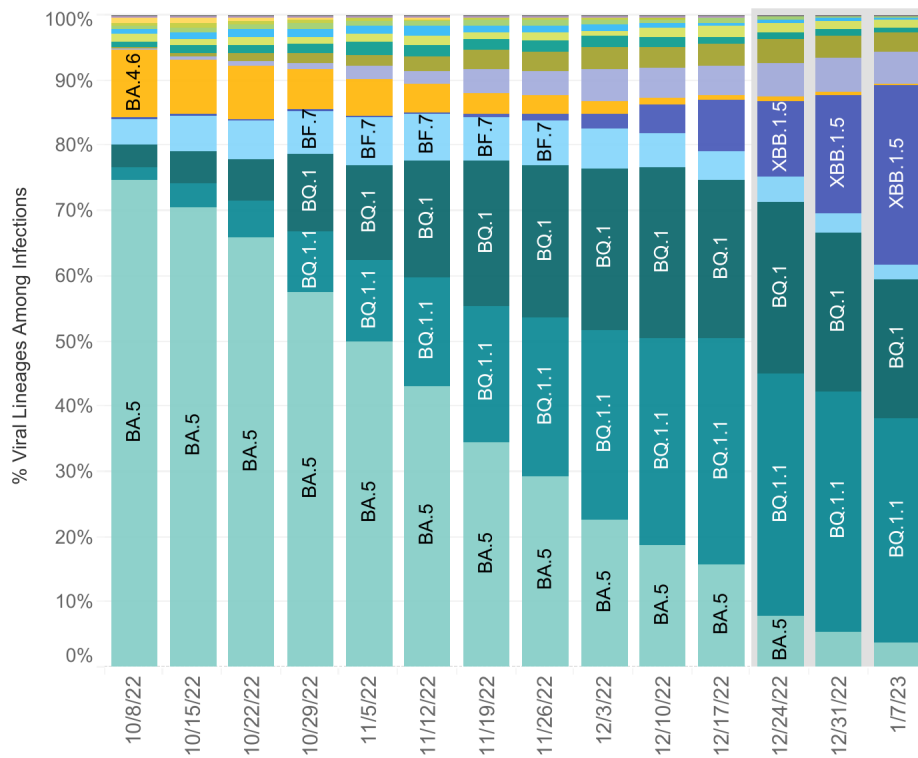
DAILY AVG. ON JAN. 8

PER 100,000

14-DAY CHANGE

Cases	67,246	20	-1%
Test positivity	16%	—	+19%
Hospitalized	47,500	14	+18%
In I.C.U.s	5,640	2	+15%
Deaths	509	<1	+19%

XBB.1.5

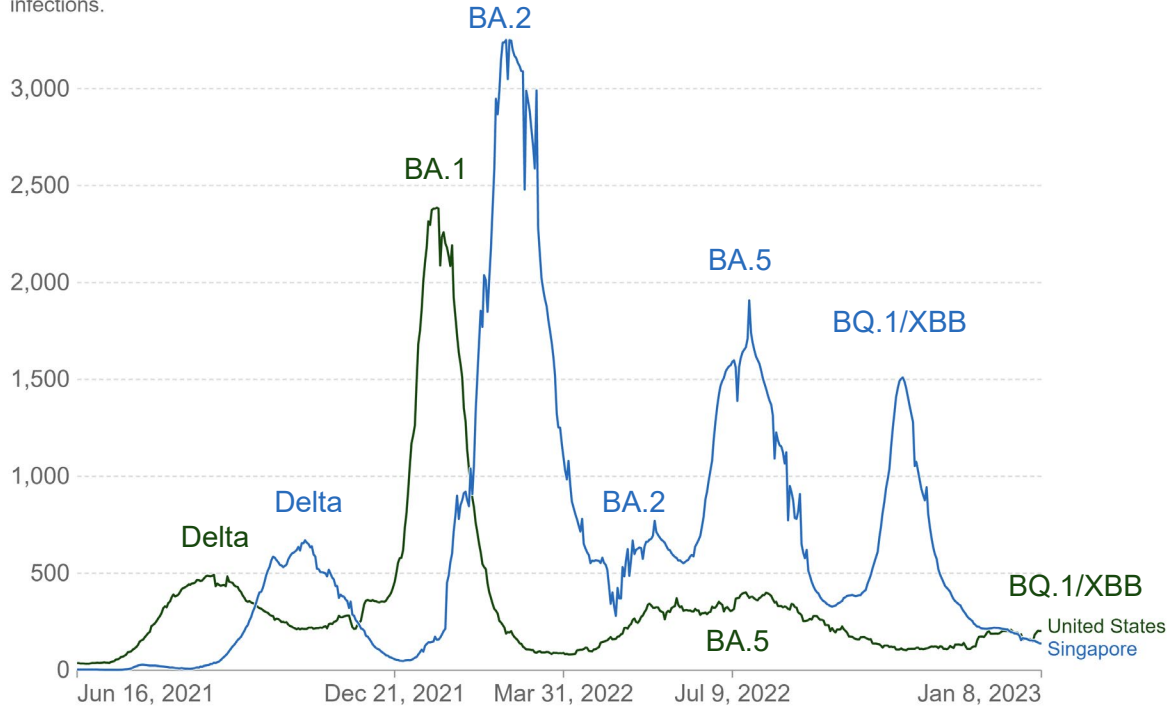


The rise of BQ and XBB variants

Daily new confirmed COVID-19 cases per million people

7-day rolling average. Due to limited testing, the number of confirmed cases is lower than the true number of infections.

Our World
in Data



Singapore's XBB Experience

Daily new confirmed COVID-19 cases & deaths per million people

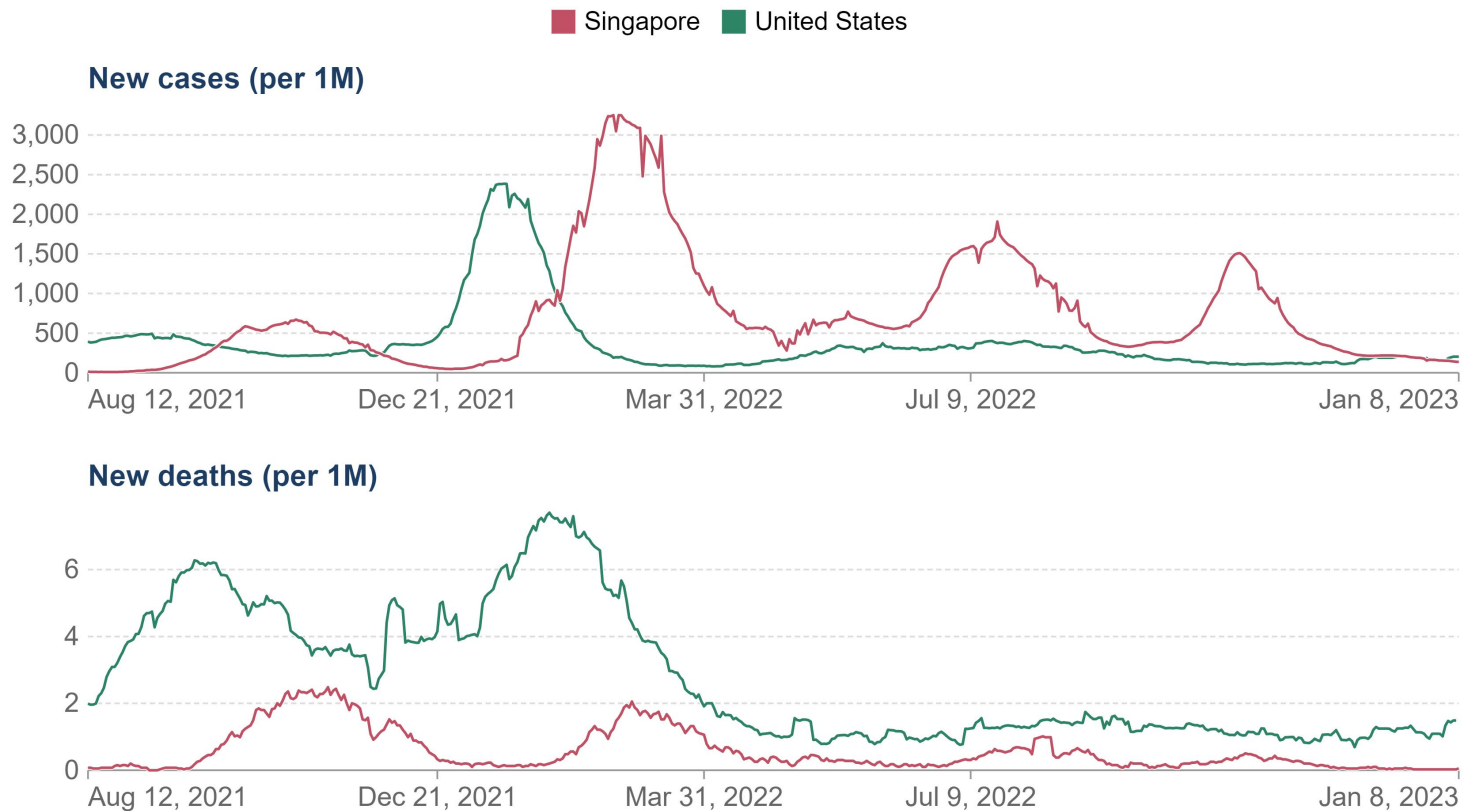
7-day rolling average. Limited testing and challenges in the attribution of cause of death means the cases and deaths counts may not be accurate.

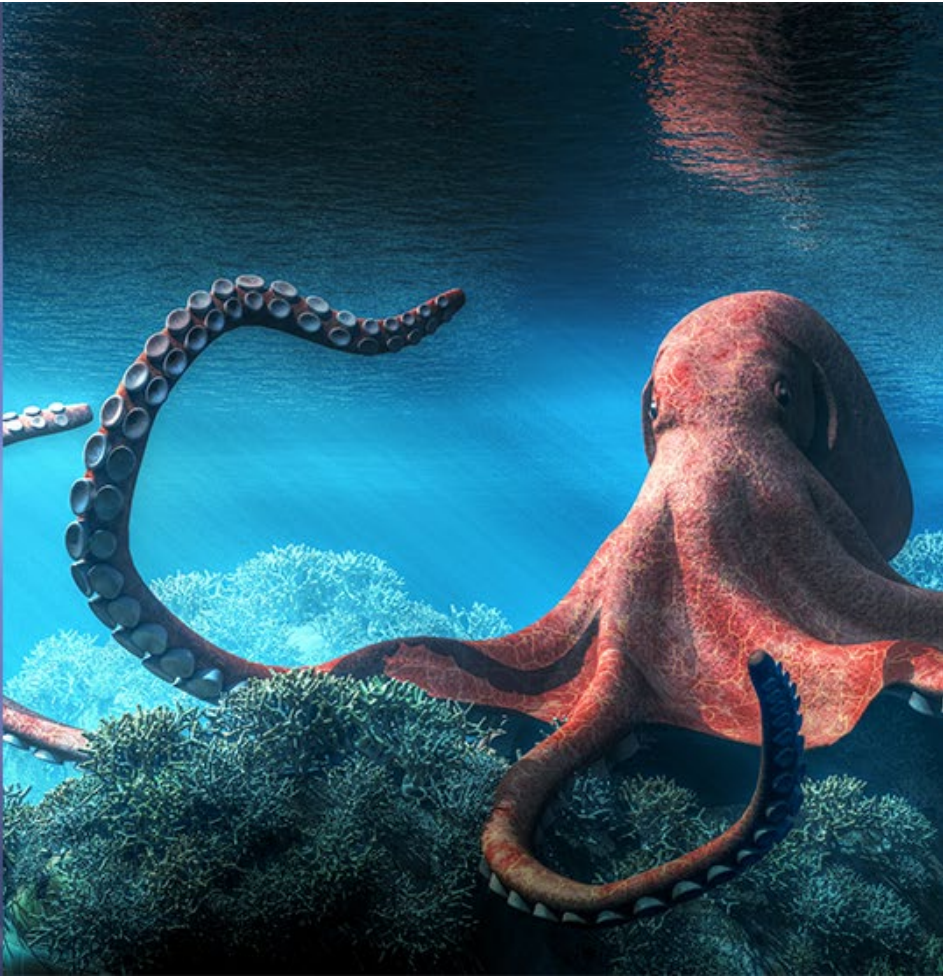
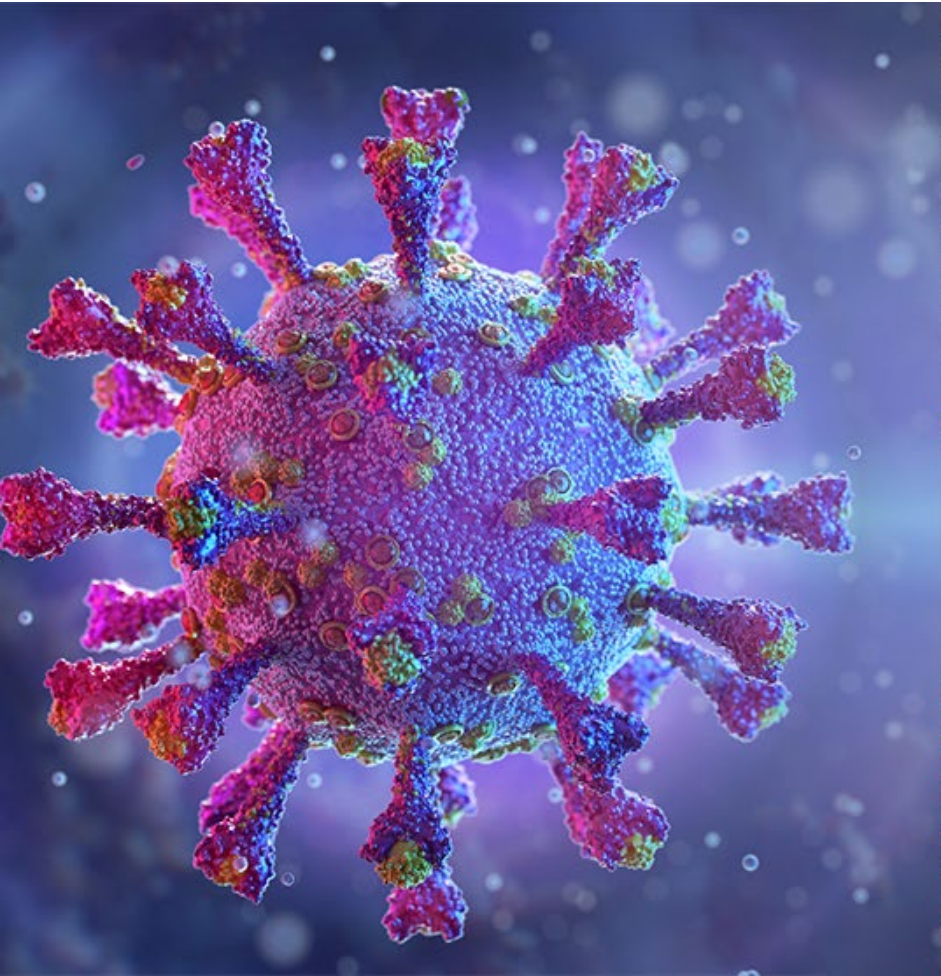


Source: Johns Hopkins University CSSE COVID-19 Data

Daily new confirmed COVID-19 cases & deaths per million people

7-day rolling average. Limited testing and challenges in the attribution of cause of death means the cases and deaths counts may not be accurate.





XBB vs. XBB.1.5

- XBB is a recombinant variant
- XBB.1.5 as immune evasive as XBB – which means many people who have had COVID may get reinfected
- XBB.1.5 – 5 times more infectious than earlier versions of Omicron

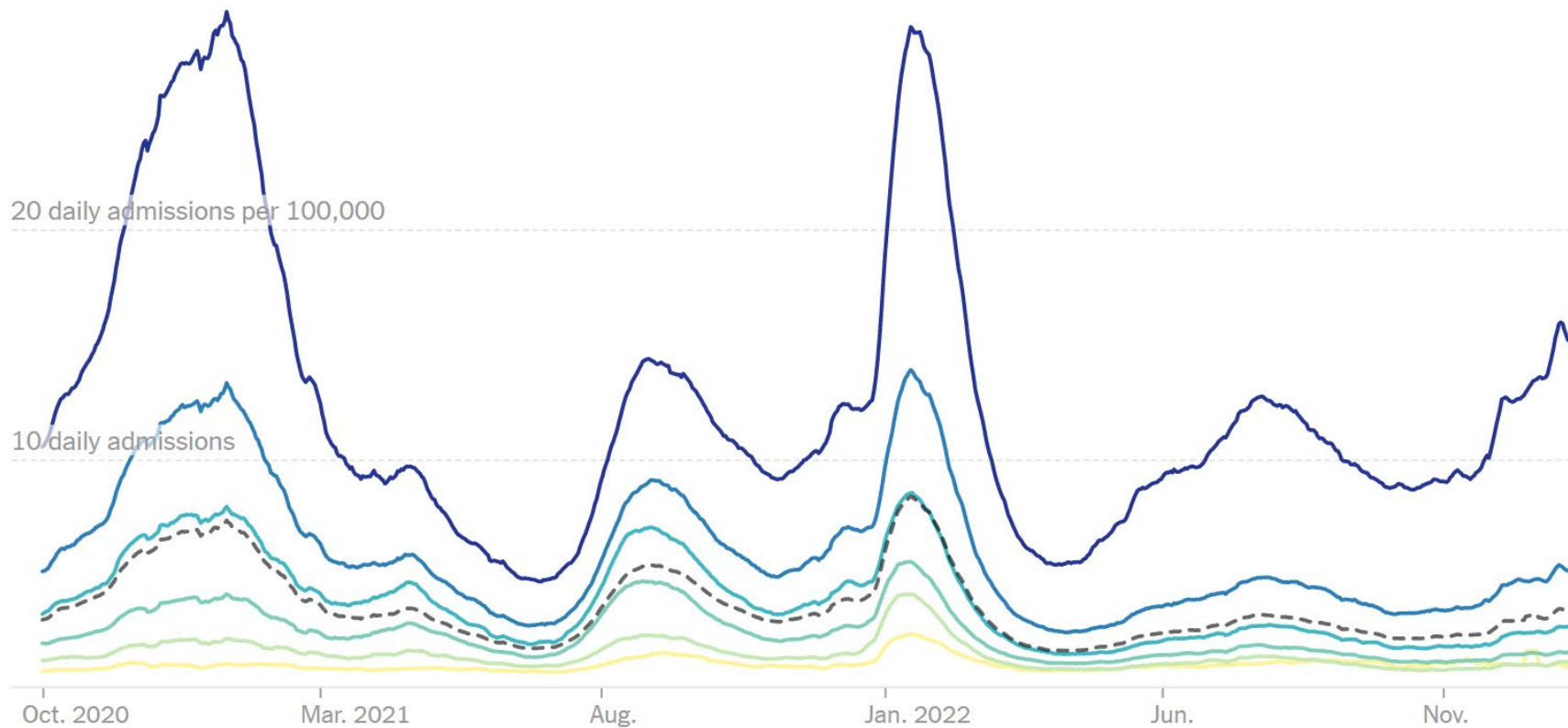
What you can do to protect yourself

- Get the new bivalent booster
- Wear a mask in public spaces/around those who are high risk
- Test if you think you may be infected
 - Free tests available at <https://www.covid.gov/tests>

All time

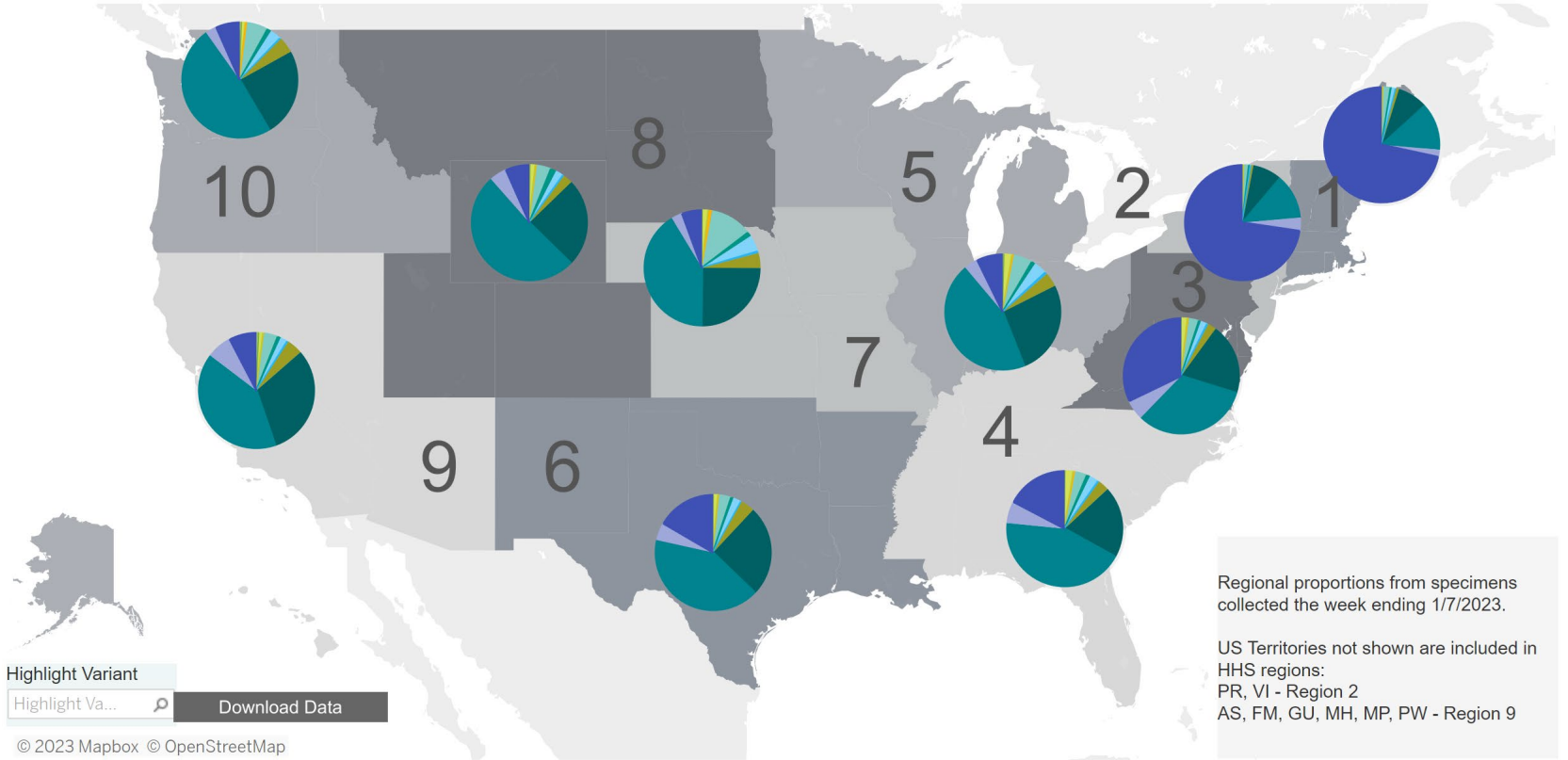
Last 90 days

UNDER 18 18-29 30-49 50-59 60-69 70+ ALL AGES



[About this data](#)

United States: 1/1/2023 – 1/7/2023 NOWCAST

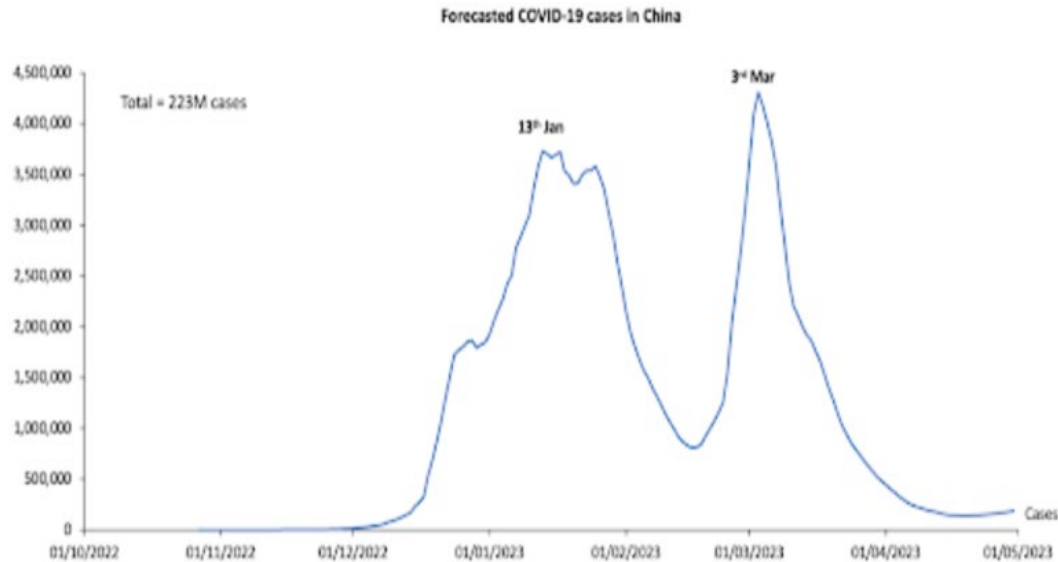


Lineages called using pangolin v4.1.3, pangolin-data v1.17 and usher v0.5.4.

China's Exit From Zero-COVID



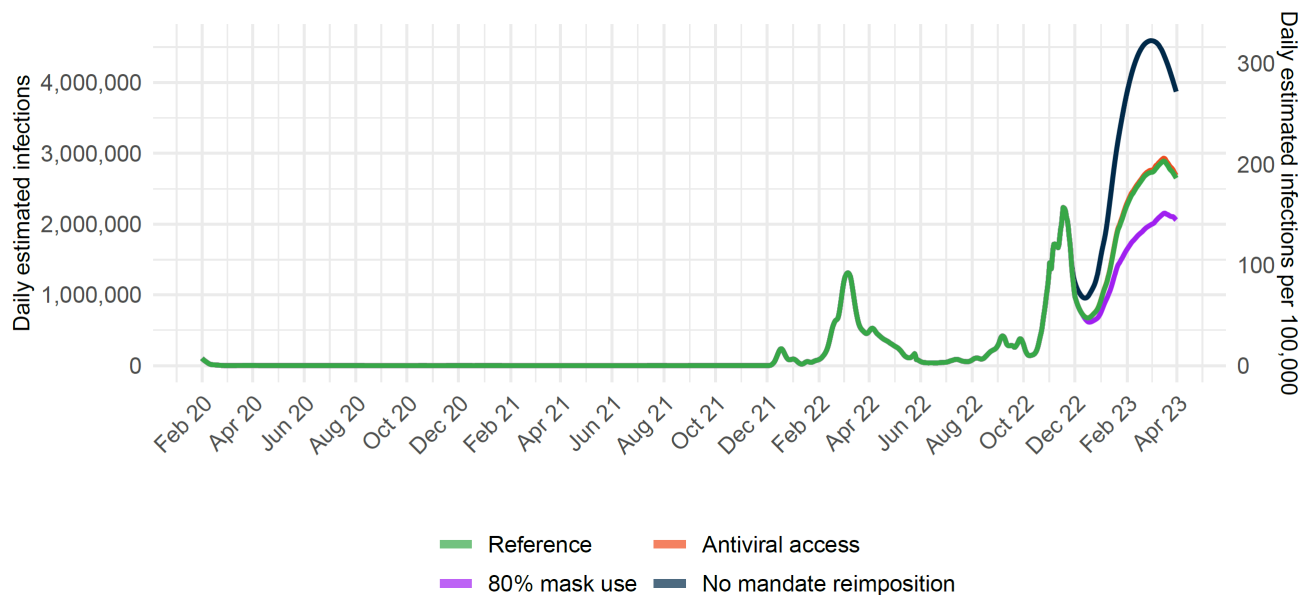
Airfinity COVID-19 projections for infections



- Based on case rates data from China and from HK and JP when they lifted COVID policies
- BJ has peaked already; hospitalizations and deaths will peak in 1-3 weeks
- Shanghai and other major cities may be peaking now or within the new few weeks.
- Hainan province-50% infected peaked; Sichuan 63% infected, peaked
- Total China first peak mid Jan at > 3.5M cases/d; Death peak 10 days later 25K/d
- 2nd higher peak driven by later surges in other Chinese provinces
- Estimate 20.4M cases and 110K deaths since 12/1/22

China Predictions Cases Based on IHME¹ Data

Figure 16.1: Daily COVID-19 infections until April 01, 2023 for four scenarios



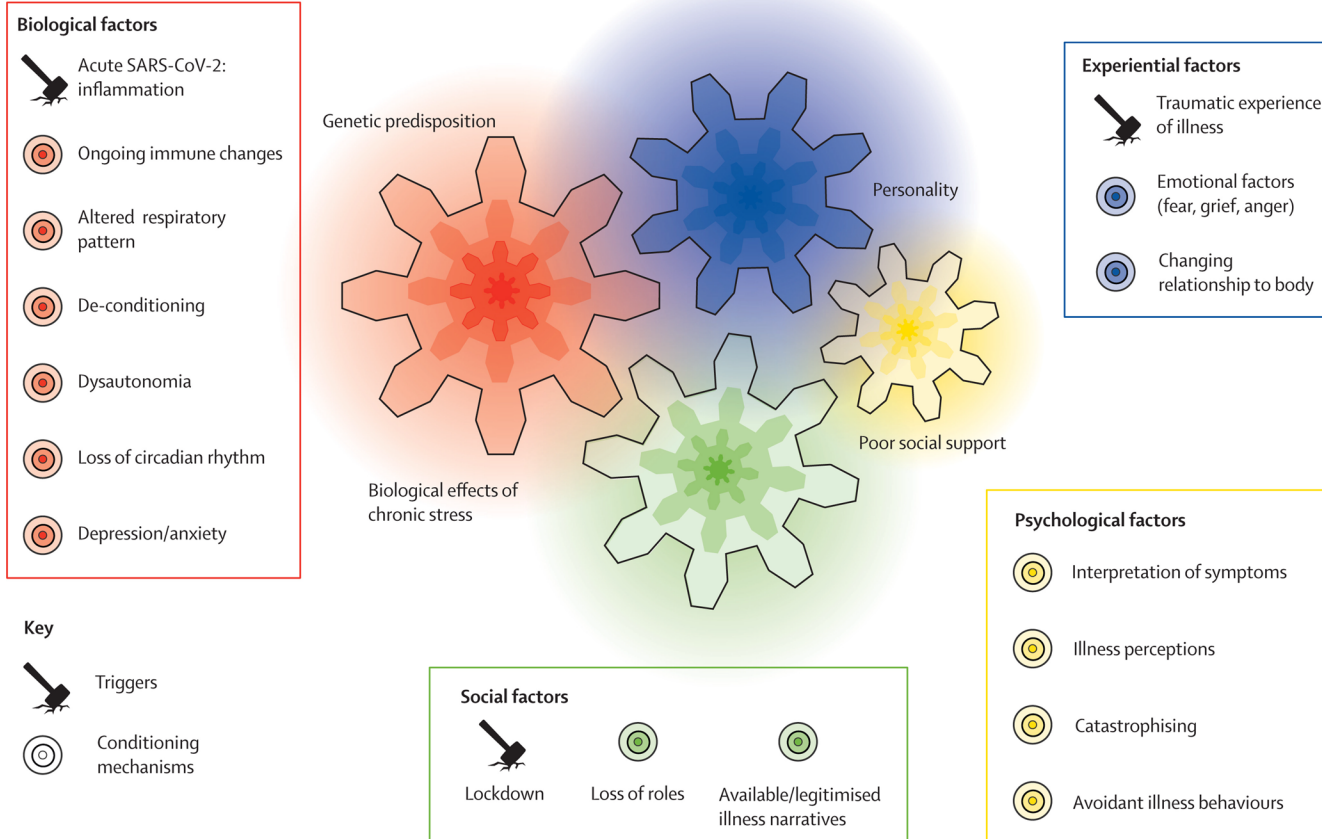
- Cases peaking in mid February with ~ 5M daily new infections if only 50% mask wearing and no lockdowns
- Reference assumes
 - Government intervention when hospitals and deaths untenable
 - 50% mask wearing
- 80% mask wearing would reduce by 50+%

Current Situation

- Expected peak in Beijing, Shanghai, Guangzhou and Chongqing this month
- However, spread to rural areas and second peak in major cities expected after the Chinese Lunar New Year
- Case rates unknown but very high
- Deaths
 - Strict criteria to count as a COVID death
 - Crematoriums 400% increase
 - Mainly elderly



A new paradigm is needed to explain long COVID



The background of the slide features a microscopic view of several coronavirus particles. These particles are spherical with a textured surface and are covered in numerous spike proteins that give them a crown-like appearance. The image is rendered in shades of blue and white, with a dark blue background.

Questions

Upcoming NEBGH virtual events

- **January 23** – Monday Bi-Weekly COVID-19 Update w/ Dr. Mark
- **June 15** – 12th Annual Health & Wellness Benefits Conference