



***WHAT WOMEN DON'T TELL YOU
ABOUT THEIR HEALTH***

Tuesday, August 13, 2024 | 12:00 – 1:00PM



Sponsored by **abbvie**

Webinar Procedures



All lines will be muted



Please submit all questions using the “Q&A” dialog box



Email Diane Engel at dengel@nebgh.org with any issues during this webinar



Closed captions are enabled for this webinar



The recording and a PDF of the presentation will be shared

A screenshot of a web browser window titled "Q&A". The main content area displays the text "You have no question." Below this is a text input field containing the text "What h". At the bottom left of the input area is a checkbox labeled "Send Anonymously", and at the bottom right is a blue "Send" button.

Speakers



Susan Khalil, MD,
Program Director for Fellowship in Minimally
Invasive Gynecologic Surgery
Icahn School of Medicine, Mount Sinai Hospital



Dr. Mark Cunningham-Hill
Medical Director
NEBGH

Endometriosis: Patient Centered Care

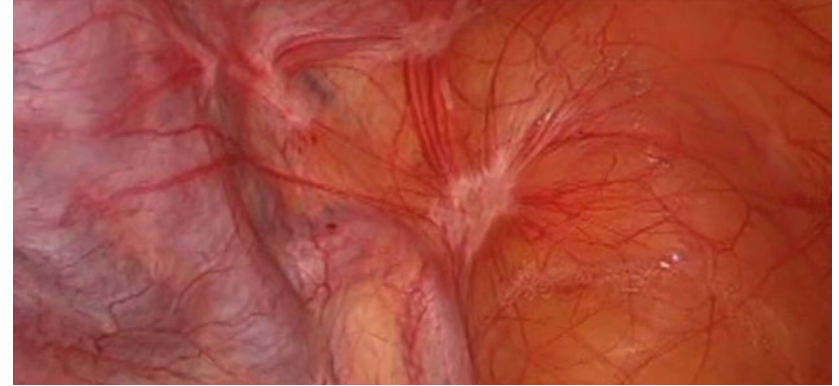
Susan Khalil, MD

Program Director for Fellowship in Minimally Invasive Gynecologic Surgery, Icahn School of Medicine, Mount Sinai Hospital

New York, NY

Agenda

- Endometriosis
- Fibroids
- Abnormal bleeding



Endometriosis

Definition:

Multi-organ gynecologic disease characterized by the presence of endometrial glands and stroma outside the uterus.

Found in women of reproductive age

Local sites: ovaries, fallopian tubes, uterus, anterior and posterior cul de sac

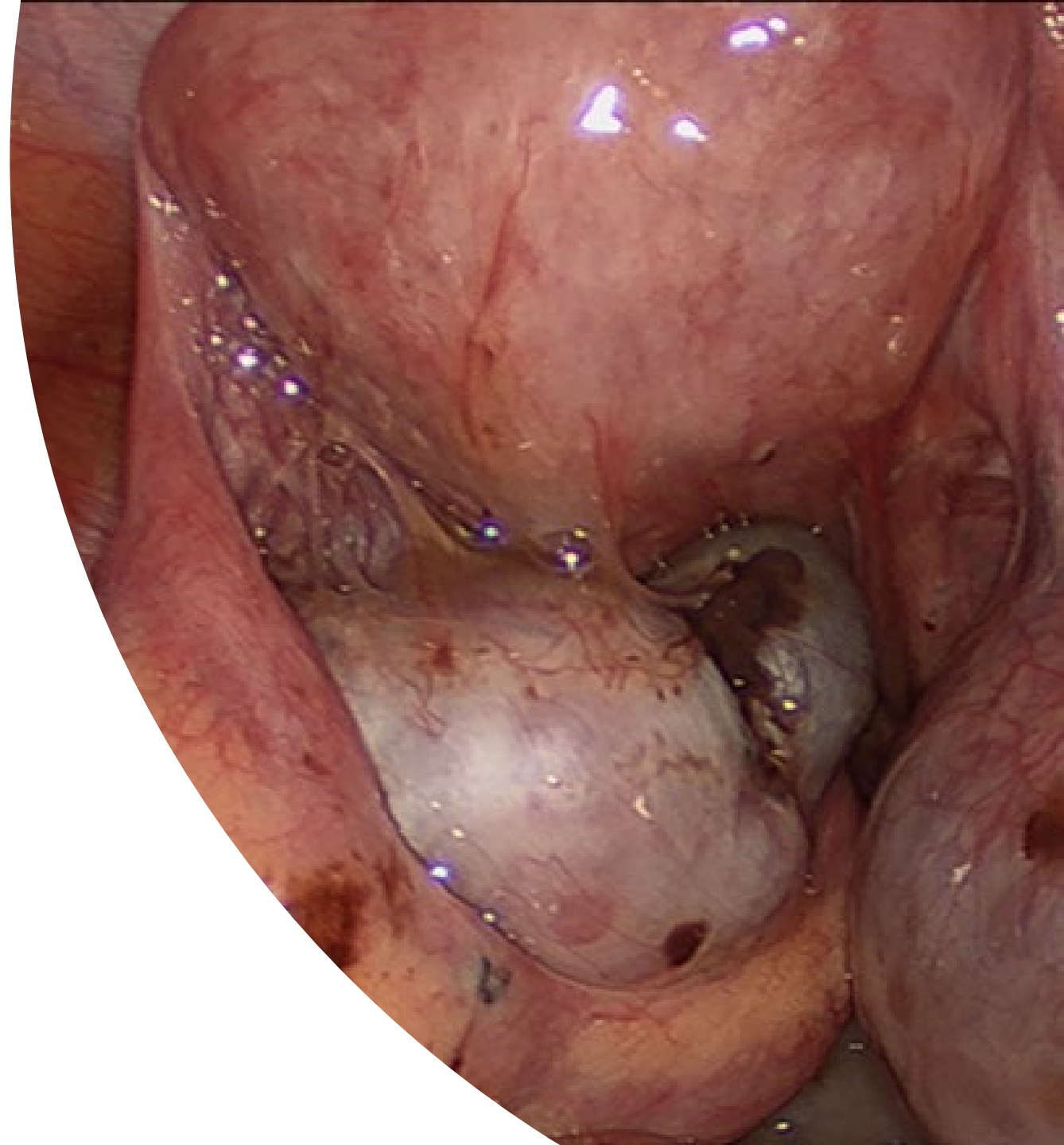
Peritoneal involvement

Deeply infiltrating endometriotic (DIE) lesions of the bowel and genitourinary tract

Distant sites: pleural cavity, pericardium, brain

Effects of Endometriotic Lesions

- Chronic inflammatory disorder
 - Increased activated macrophages and proinflammatory cytokines in the peritoneal fluid
 - Tumor necrosis factor alpha
 - Interleukins 1, 6, and 8
 - Nerve growth factor (rectovaginal lesions)
- May cause pain and infertility.



Associated Conditions

Chronic pelvic pain

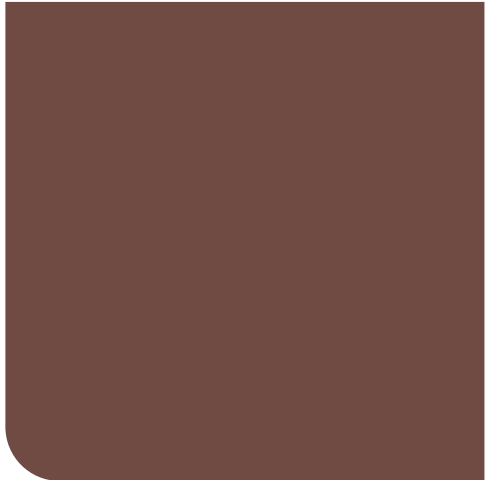
Infertility

Risk of Cancer: Ovarian
Cancer

Patient Centered Care

- Patient- centered care encourages the active collaboration and shared decision-making between patients, families, and providers to design and manage a customized and comprehensive care plan.





Thank you!

- Susan.Khalil@mountsinai.org

References

- Bedaiwy MA, Falcone T, Sharma RK, Goldberg JM, Attaran M, Nelson DR, et al. Prediction of endometriosis with serum and peritoneal fluid markers: a prospective controlled trial. *Hum Reprod* 2002;17:426–31.
- Anaf V, Simon P, El Nakadi I, Fayt I, Simonart T, Buxant F, et al. Hyperalgesia, nerve infiltration and nerve growth factor expression in deep adenomyotic nodules, peritoneal and ovarian endometriosis. *Hum Reprod* 2002;17:1895–900.
- Malinak LR, Buttram VC Jr, Elias S, Simpson JL. Heritage aspects of endometriosis. II. Clinical characteristics of familial endometriosis. *Am J Obstet Gynecol* 1980;137:332–7.
- Matalliotakis IM, Arici A, Cakmak H, Goumenou AG, Koumantakis G, Mahutte NG. Familial aggregation of endometriosis in the Yale Series. *Arch Gynecol Obstet* 2008;278:507–11.
- Patient-Centered Care, *NEJM Catalyst*.
<https://catalyst.nejm.org/doi/full/10.1056/CAT.17.0559>
- Comprehensive Gynecology
- Speiroff
- ACOG PB #114
- Nezhat Textbook

Questions? Please use the Q&A Box

Upcoming Events

- **August 19** – Mondays w/ Dr. Mark & Dr. Michael: The Power of Prevention: How 40% of US Cancer Cases Could Be Avoided
- **September 12** – Pharmacy Benefits 2024
- **September 16** – Mondays w/ Dr. Mark & Dr. Michael
- **September 25** - The Loneliness Epidemic in America and Other Updates From the Surgeon General's Office
- **September 26** – Up and Comers BenefitsBlueprint Series: Benchmarking Leave and Time Off
- **November 7** - Advances in Lung Cancer: Progress, Promise, and Workplace Support

